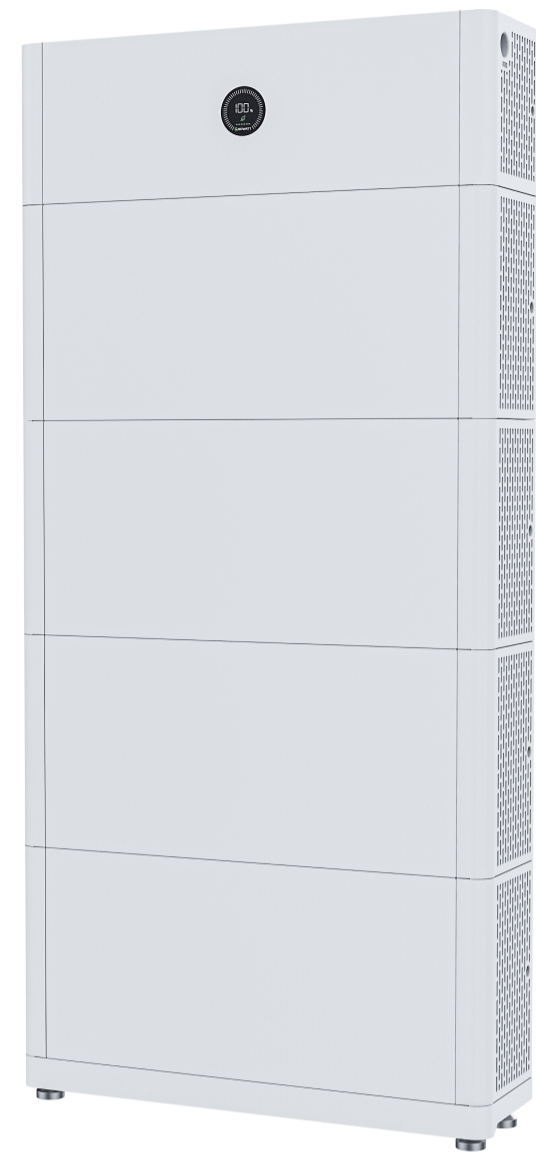
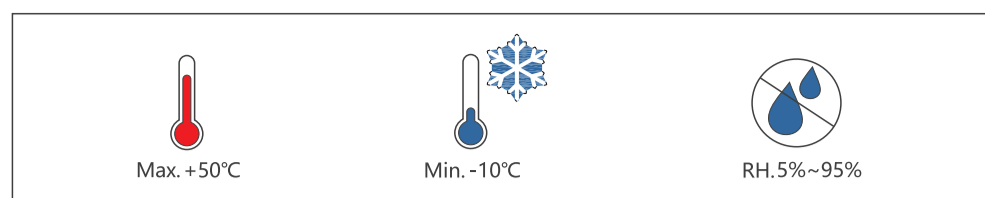


Quick Guide
APX 5.0~30.0P-S0

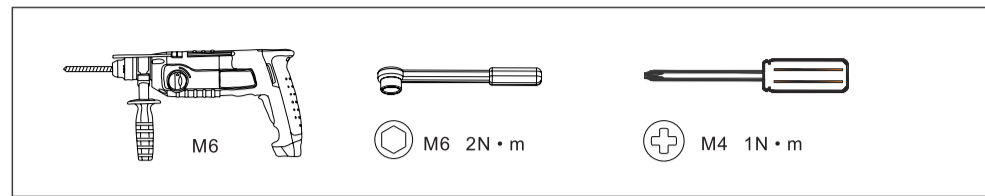


ShenZhen Growatt New Energy Co.,Ltd.

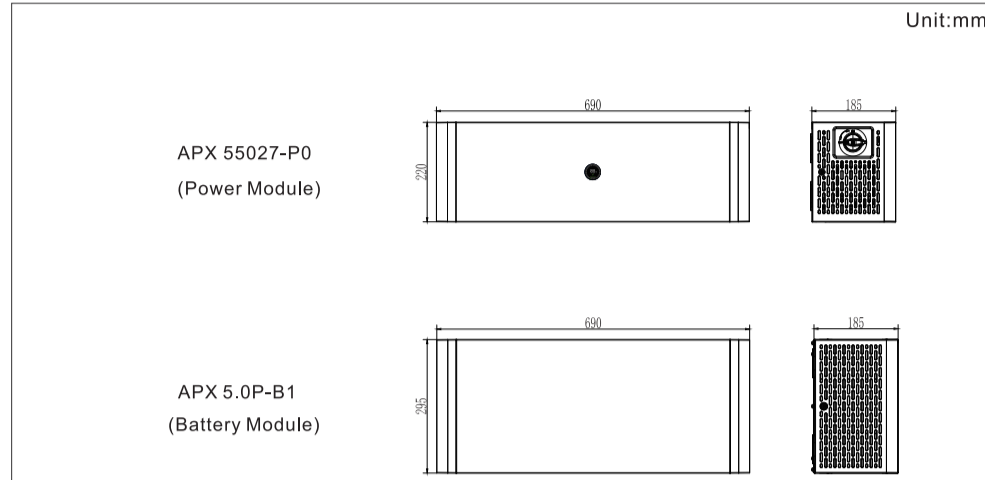
Environmental conditions



Installation tools

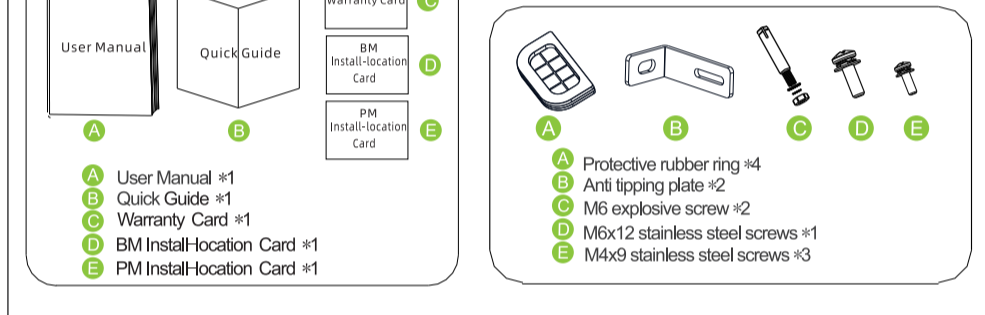
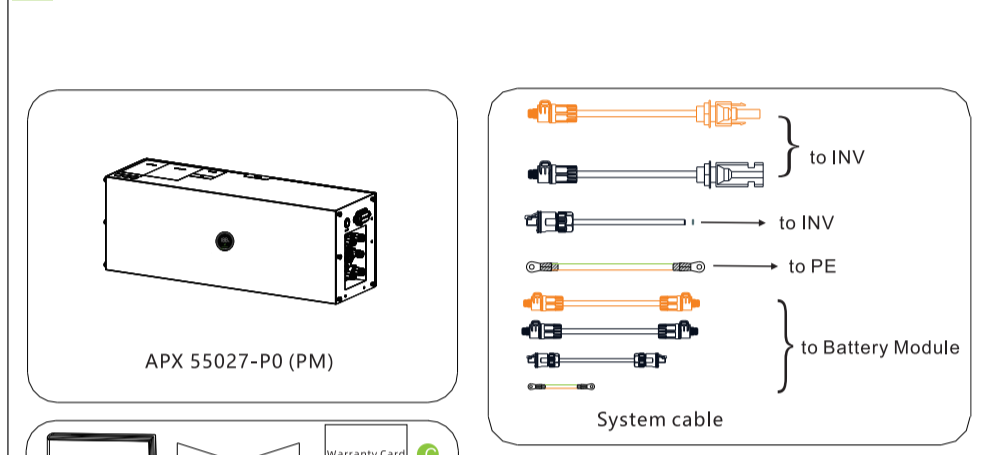


System size

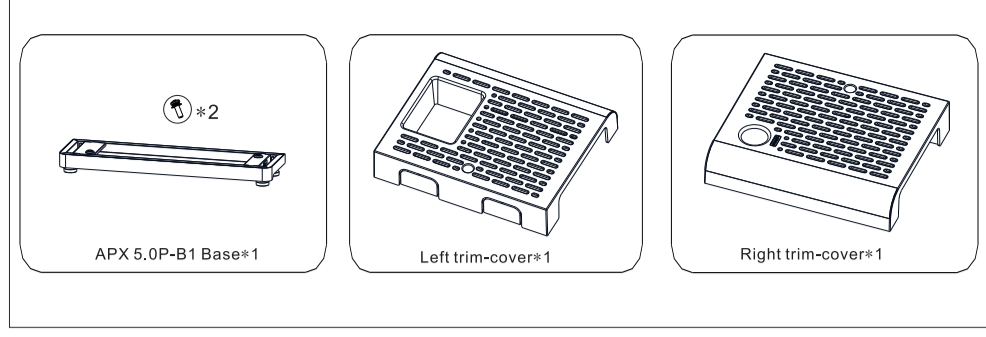


1. Inspection upon delivery

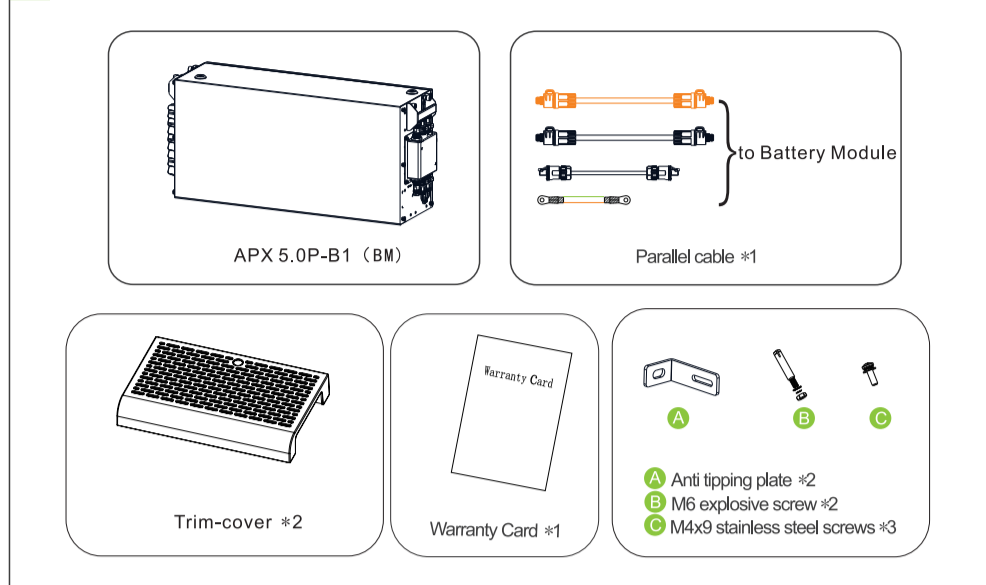
1-1 Checking the APX 55027-P0 packing list (New packaging)



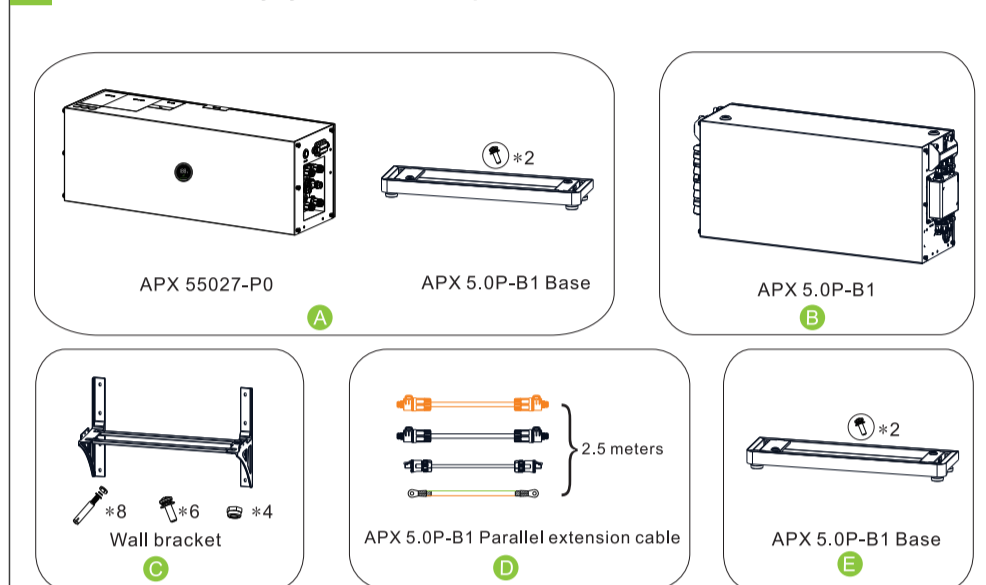
1



1-2 Check APX 5.0P-B1 List



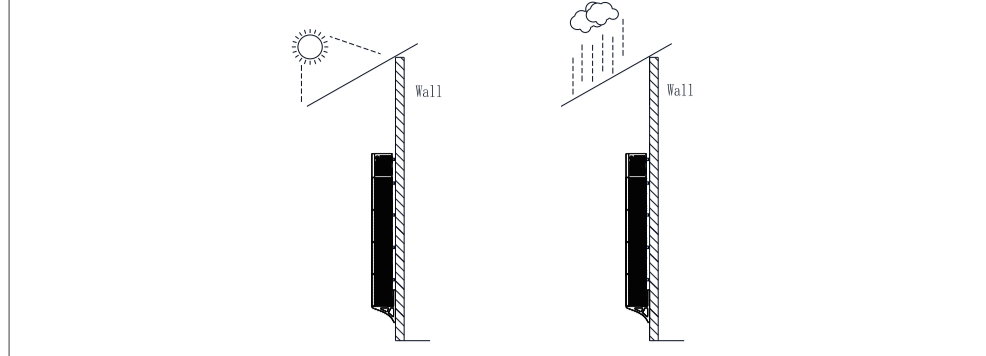
1-3 Check the APX Battery System of different capacities



Battery System Capacity	Floor Installation Compound Mode	Wall-Mounted Installation Compound Mode
5kWh	A+B	A+B+C
10kWh	A+B+2	A+B+2+C
15kWh	A+B+3	A+B+3+C
20kWh	A+B+4	A+B+4+C
25kWh	A+B+5+E+D	A+B+5+C+2+D
30kWh	A+B+6+E+D	A+B+6+C+2+D

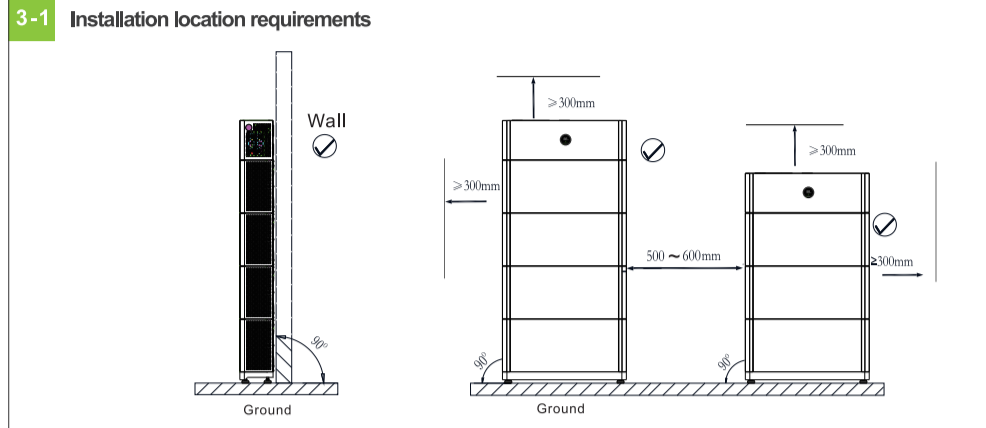
2

2. Installation environment requirements



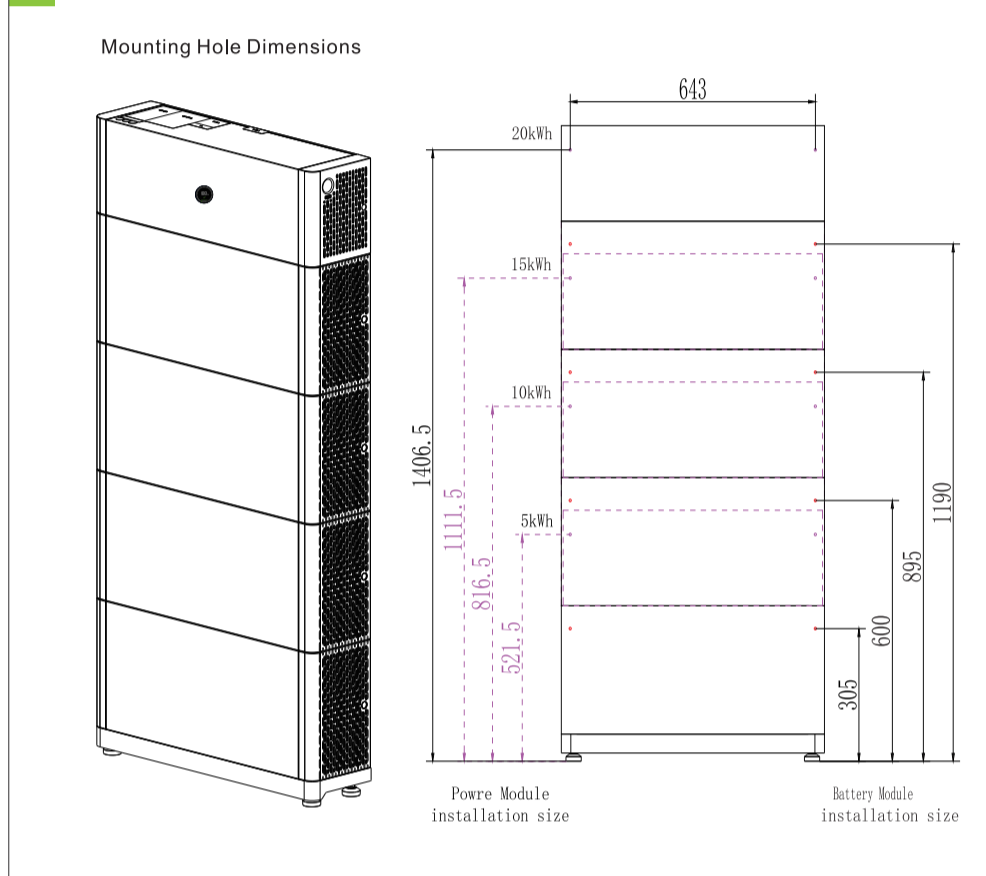
Note: When installed outdoors, build a sun/rain shelter to protect the battery system from direct sunlight and rain.

3. Floor-mounted installation

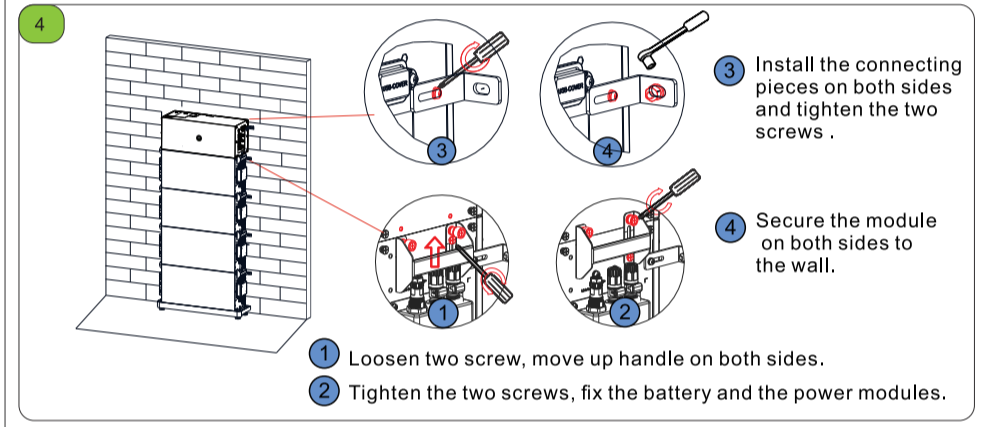
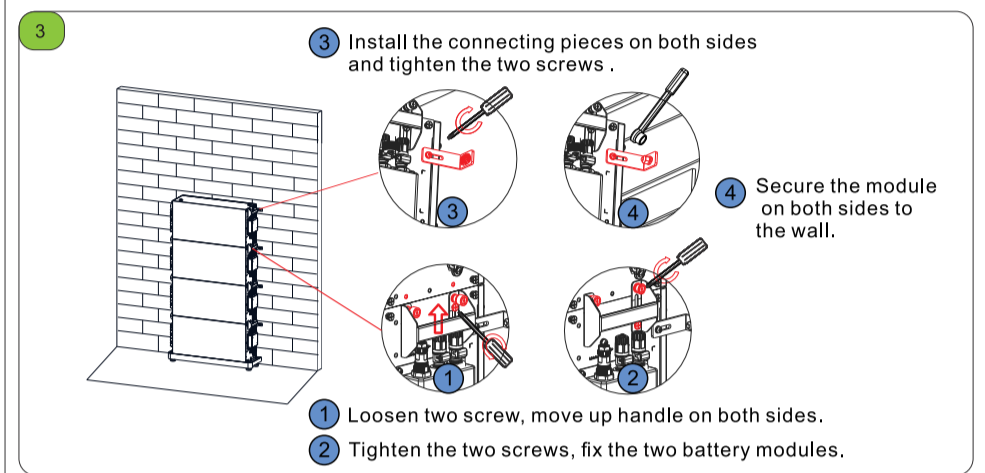
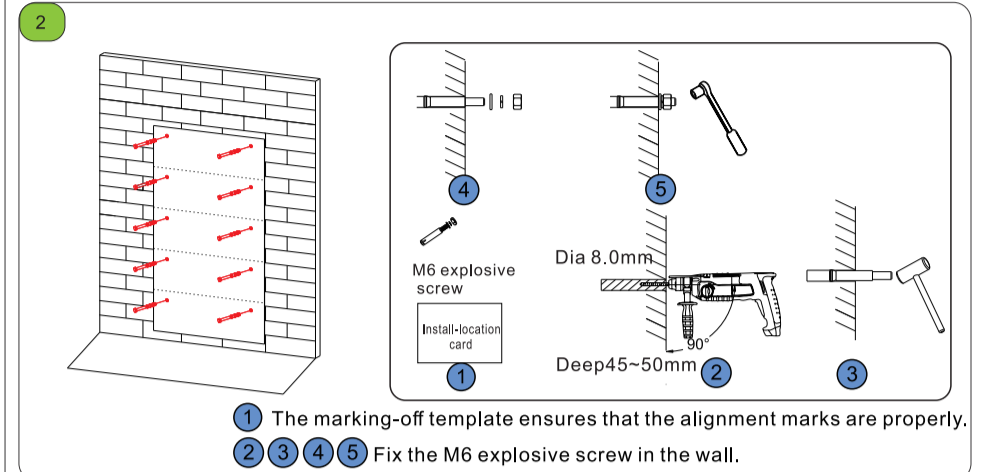
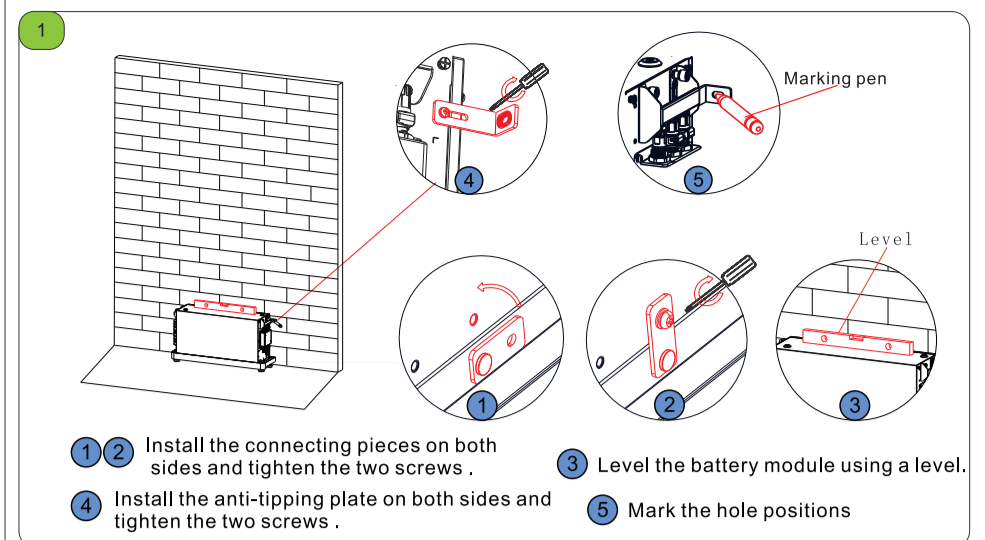


Note: For the floor-mounted installation with the base, a maximum of six battery modules can be configured. If the number of the battery modules to be installed is greater than four, you are advised to install them in 2 columns.

3-2 Installation procedure

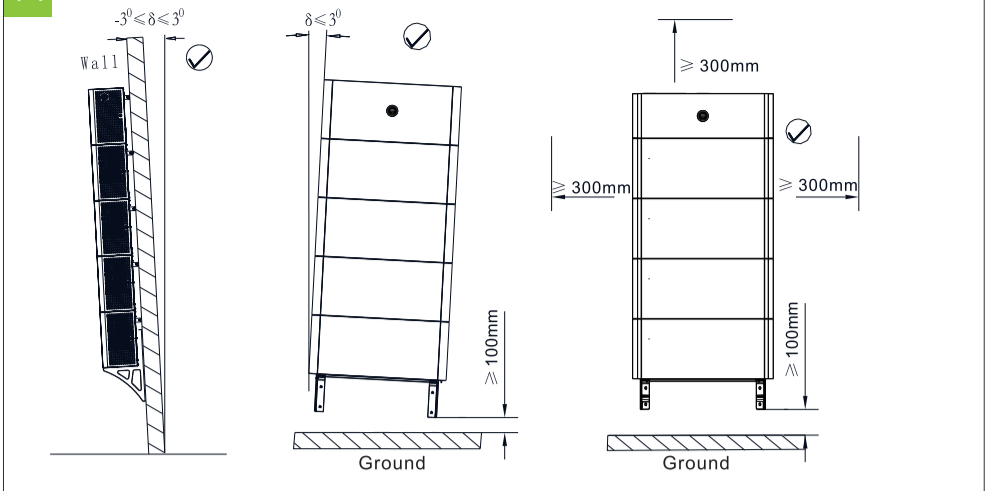


3



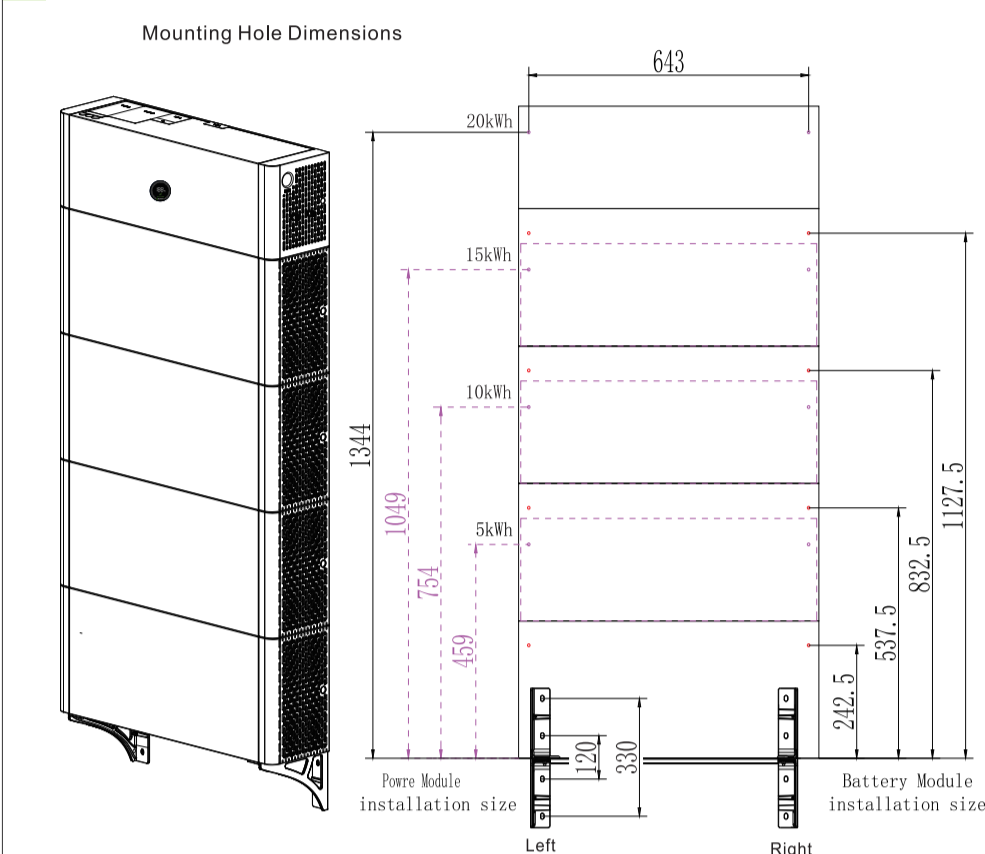
4

4. Wall-mounted installation

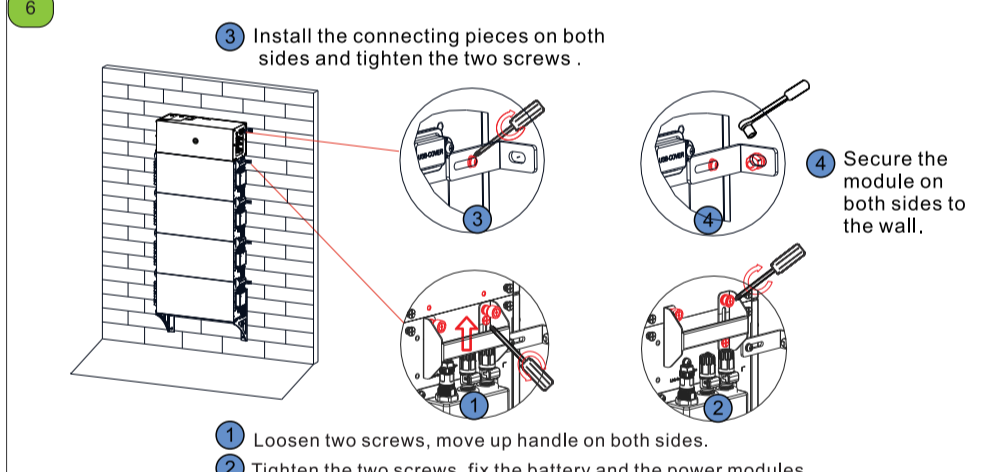


Note: When mounted on the wall, a maximum of six battery modules can be configured. If the number of the battery modules to be installed is greater than four, you are advised to install them in 2 columns. Ensure that the load-bearing capacity of the wall exceeds the total weight of the system (PM weighs 10 kg and each BM weighs 50 kg).

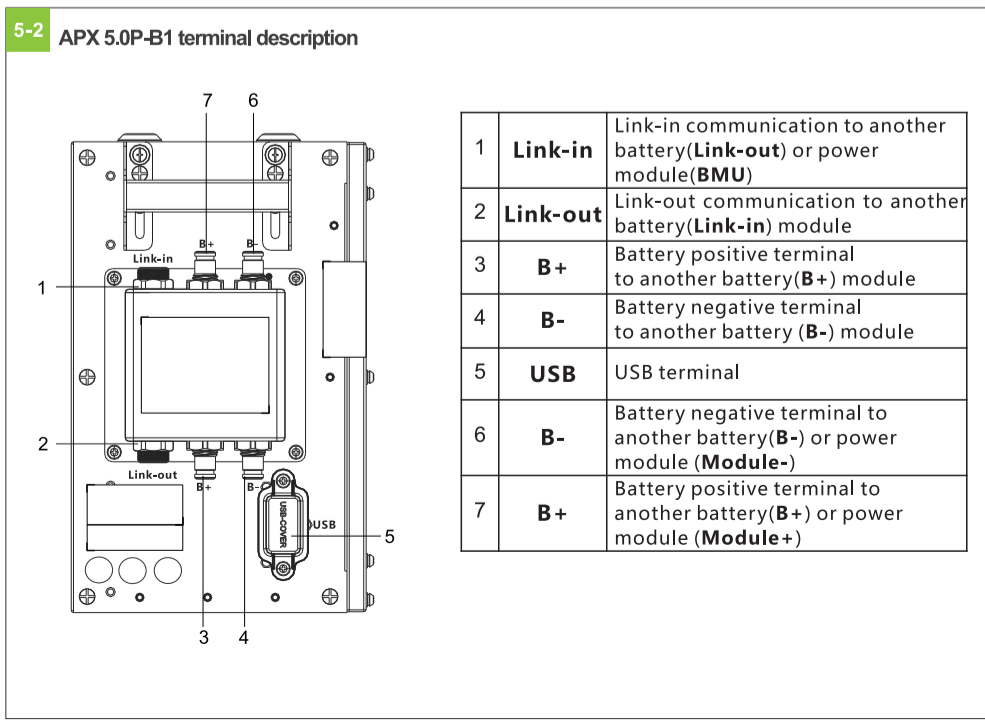
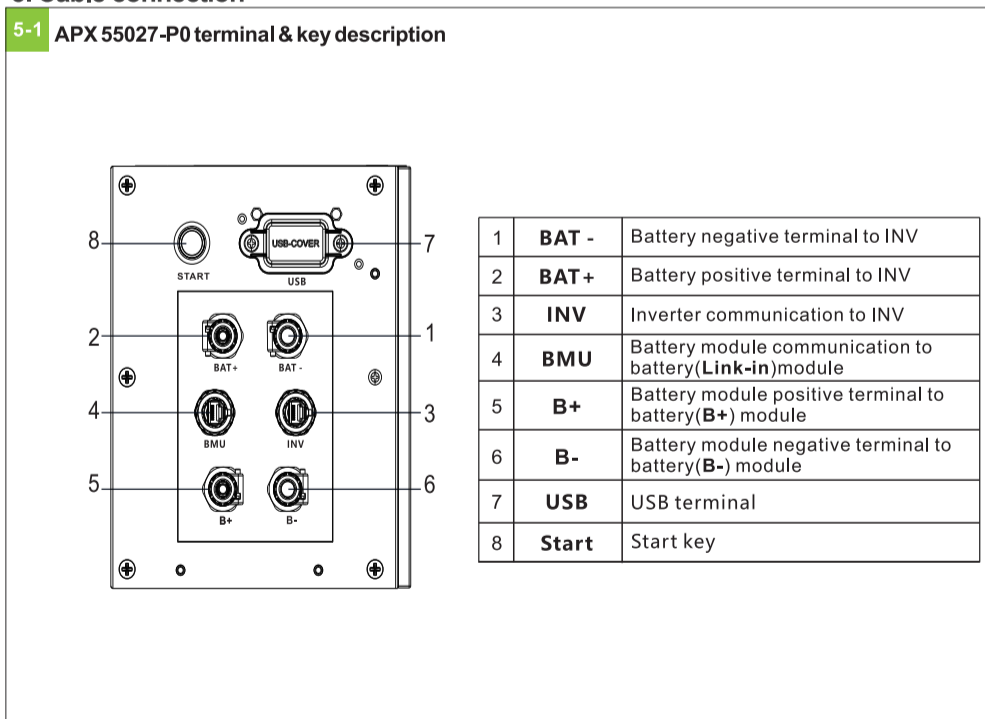
4-2 Installation procedure



5



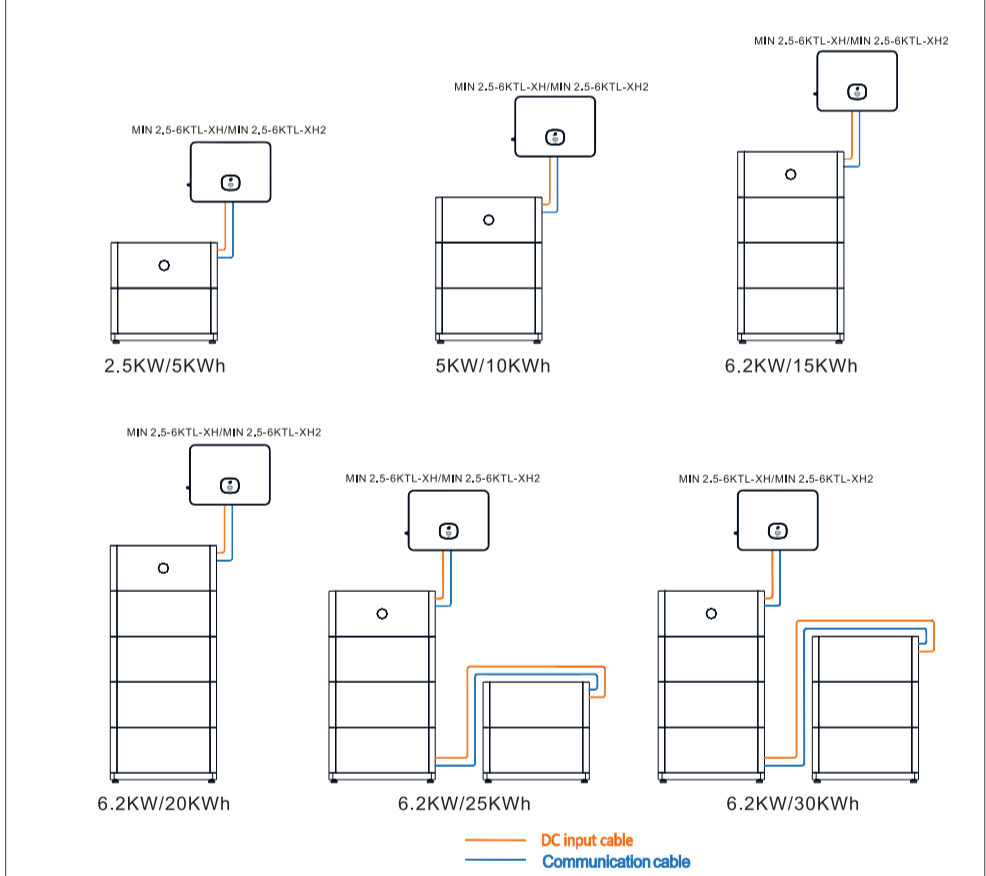
5. Cable connection



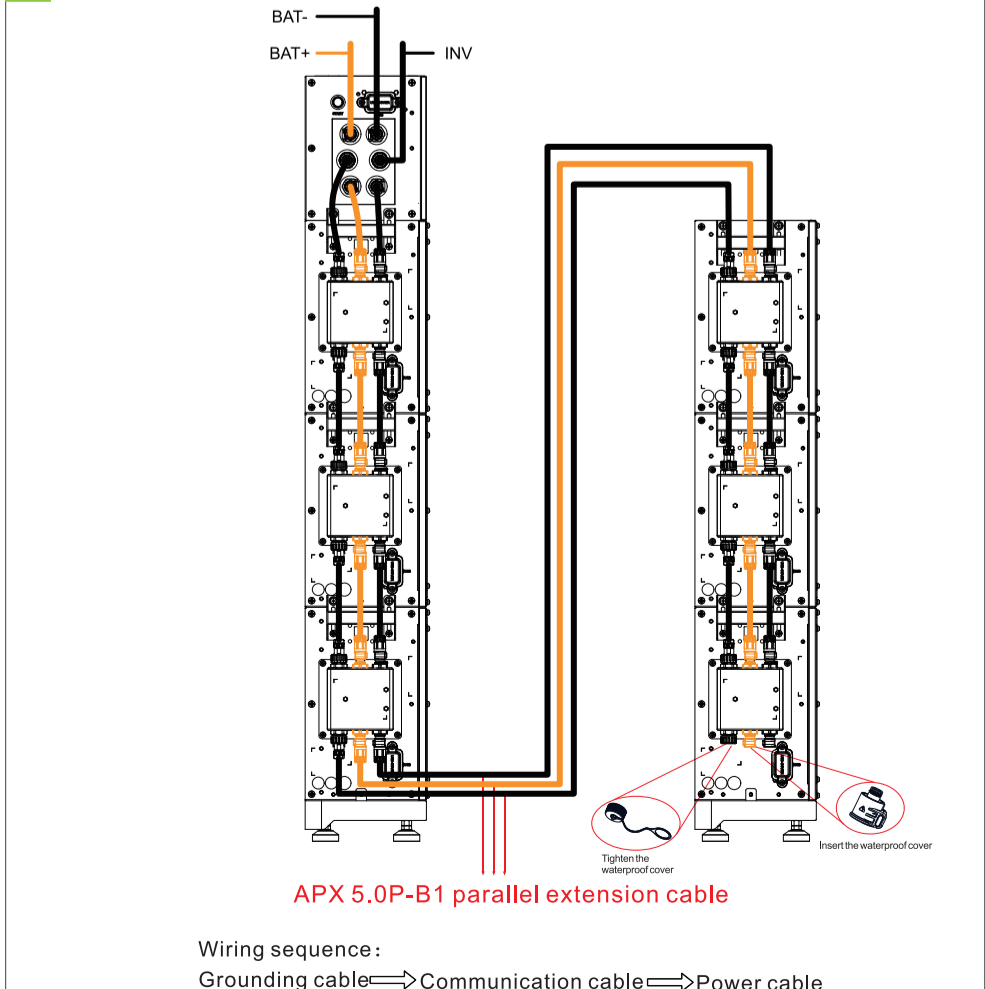
7

5-3 Battery capacity description

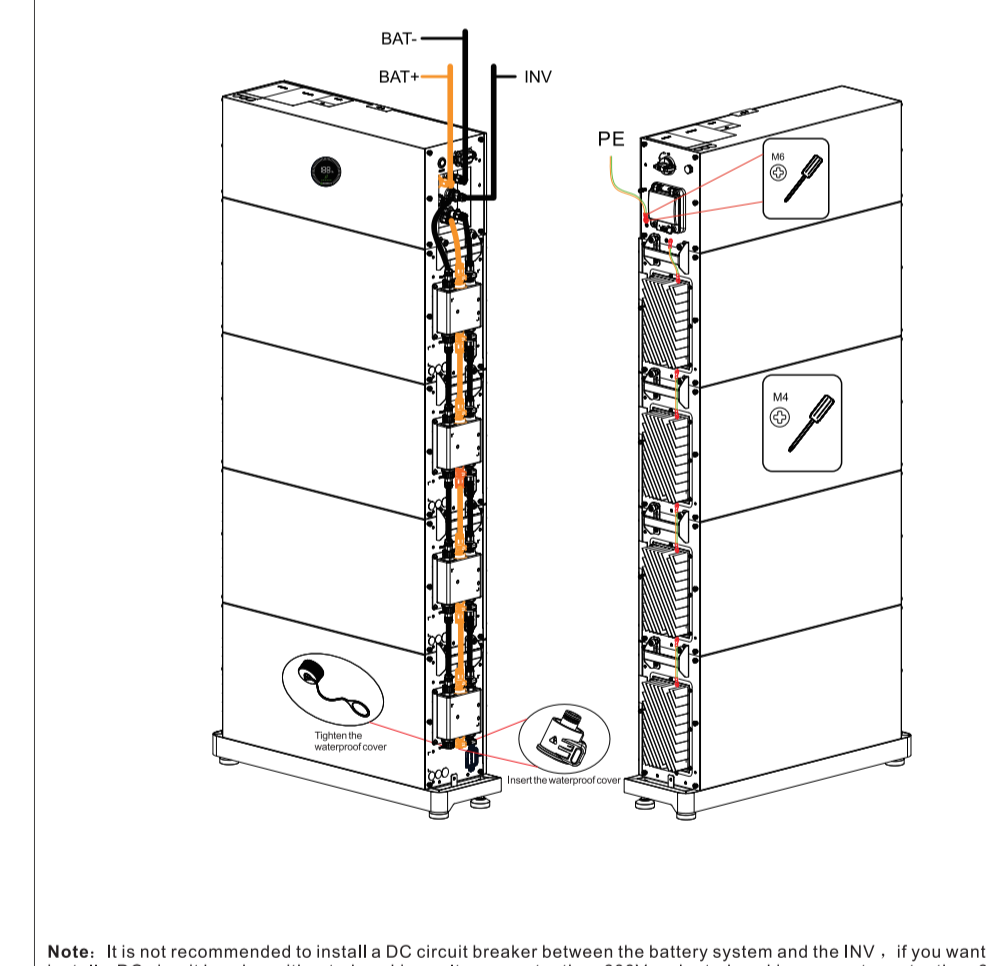
The battery system supports power and capacity expansion. Two power control modules can be connected in parallel. One power control module supports a maximum of four battery expansion modules.



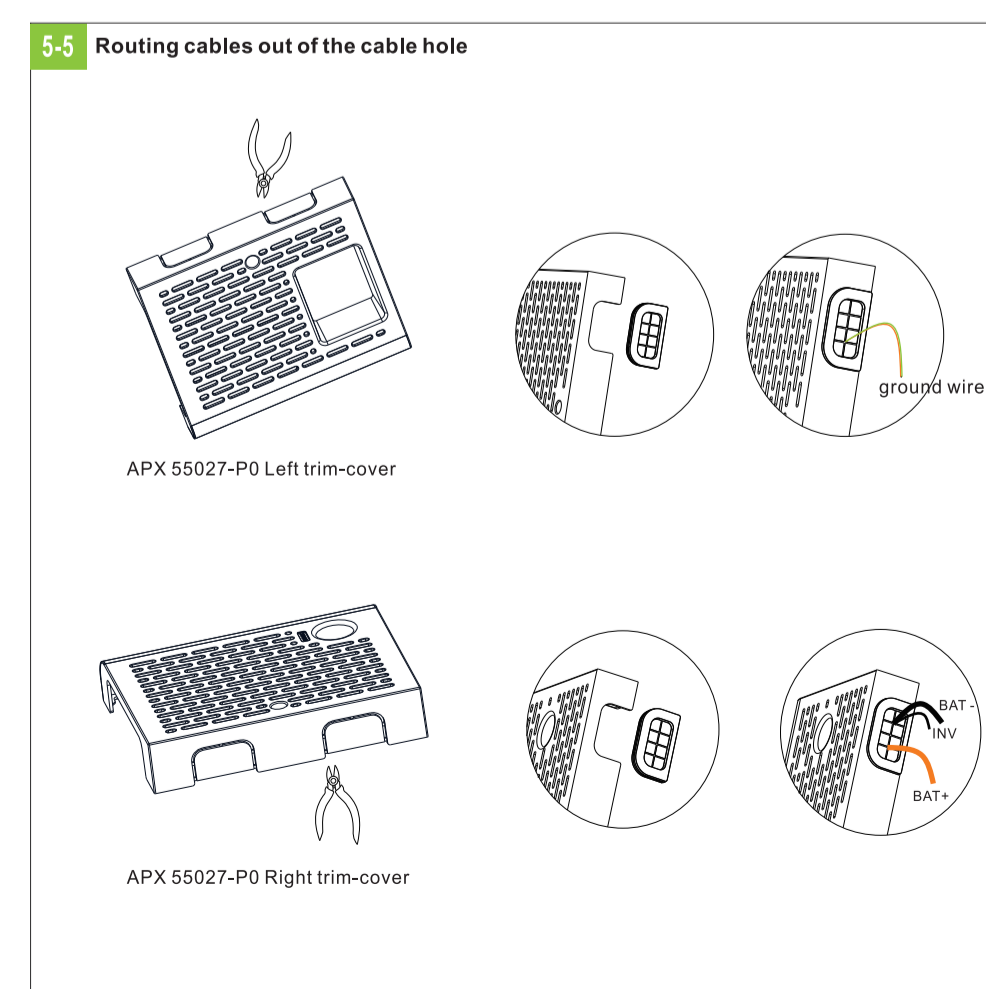
5-4 System wiring diagram



8



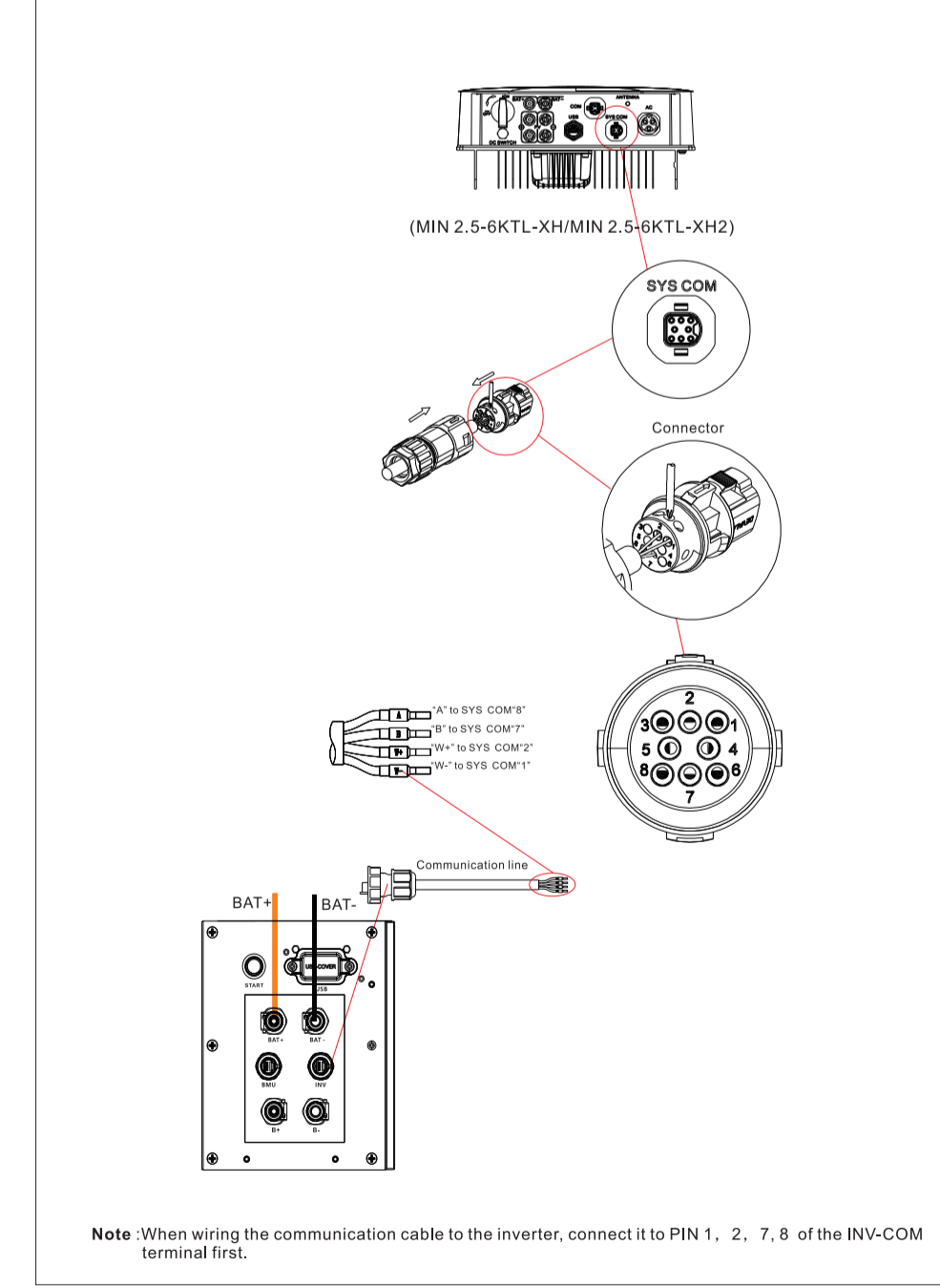
5-5 Routing cables out of the cable hole



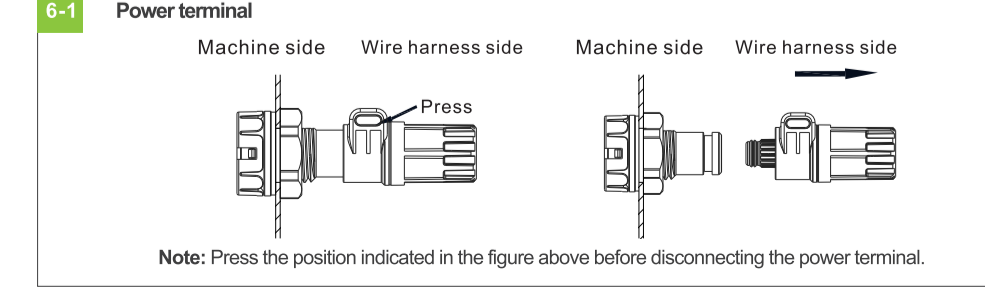
9

5-6 Communication port connection

APX 5.0~30.0P-S0		(MIN 2.5-6KTL-XH/MIN 2.5-6KTL-XH2)		
Silk screen	Terminal serial number	Silk screen	Terminal serial number	
INV	1	WAKE-(W-)	1	Enable-
	2	WAKE+(W+)	2	Enable+
	7	RS485_B(B)	7	BAT_B
	8	RS485_A(A)	8	BAT_A

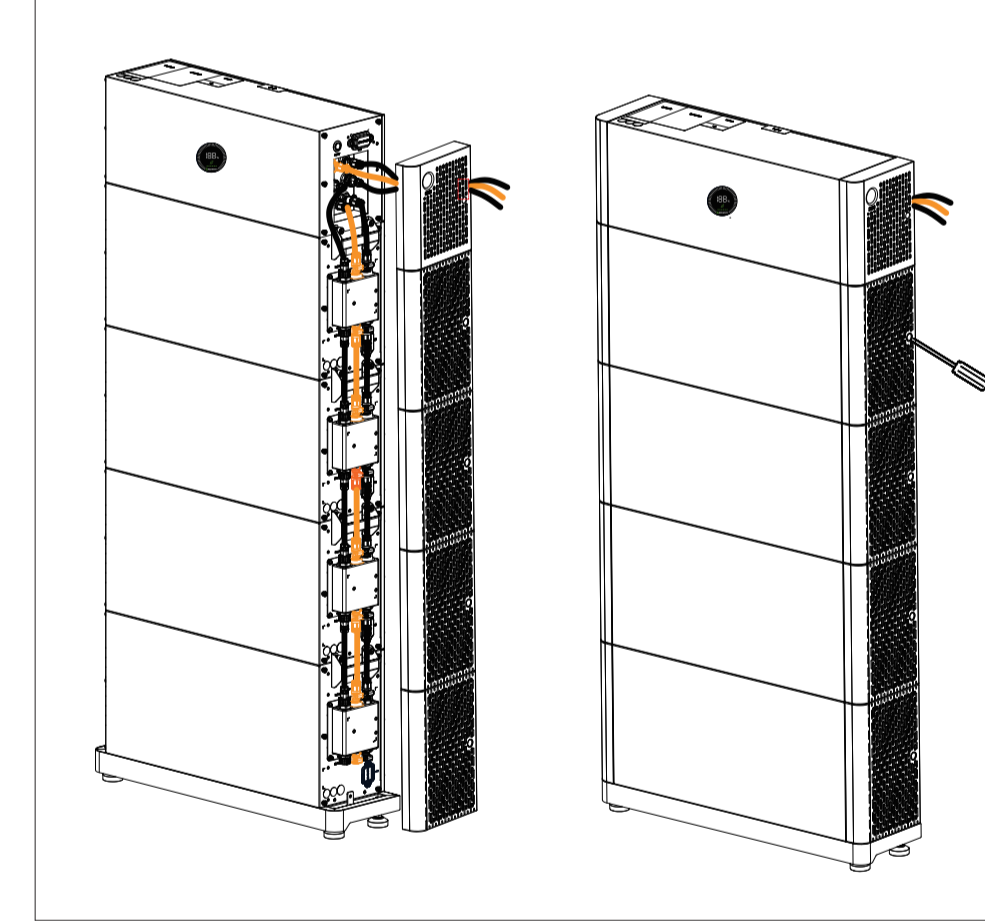


6. Terminal connection

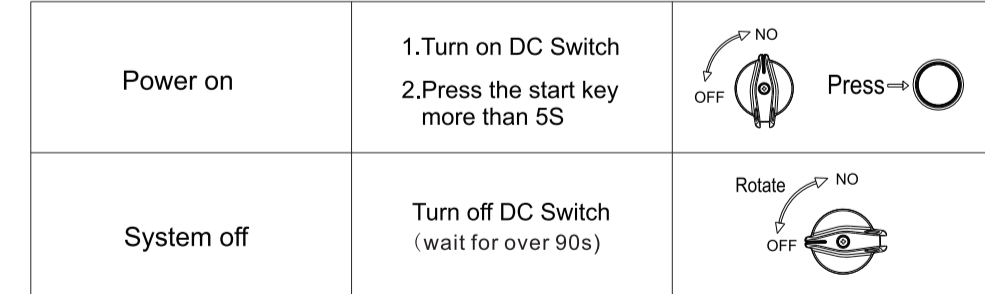


10

6-2 Installing the trim-cover



7. Powering on/off the battery system



Note: 1. Before performing maintenance and repair work, ensure that the AC circuit breaker and the PV switch of the PCS, as well as the switch of the APX are disconnected. Wait for 15 minutes after the system is powered off and make sure that the LOCK (GROWATT) indicator on the APX is off. Do not perform any operations until the system is completely shut down.
2. When multiple battery systems are used in parallel connection, you only need to press the start key of and module to start the system.
3. The content of this document is continually reviewed and amended, where necessary. Growatt reserves the right to make changes to the material at any time and without notice. Unless otherwise agreed, this document is for quick installation guidance only. All information and suggestions in this document do not constitute a warranty of any kind, express or implied. Growatt reserves all rights for final interpretation.

8. Service and contact

Shenzhen Growatt New Energy Co., Ltd
4-13/F Building A Sino-German(Europe) Industrial Park,
Hangsheng Ave. Bao'an District, Shenzhen, China
☎ +86 755 2747 1942 📧 service@growatt.com
www.growatt.com

Download Manual

11