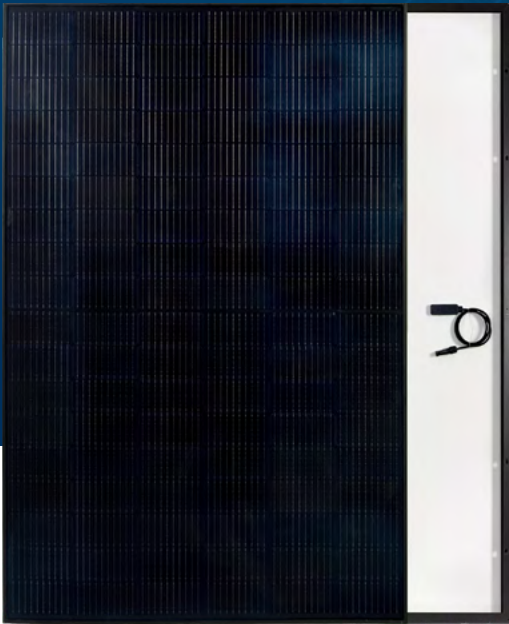


Silk[®] Plus All Black



PERC | TECHNOLOGY
INSIDE

400 W 20.48 %

Maximum power

Maximum efficiency

KEY BENEFITS AND FEATURES



Power **400 Watt**



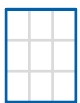
108 M10 **PERC** half-cut cells



Ideal for **residential** installations with black roofs and available in the **Carbon Neutral** version



The design with **two independent sections** ensures a higher energy yield under shaded conditions



Black frame and black backsheet



1722 x 1134 x 30 mm

Performance guarantee

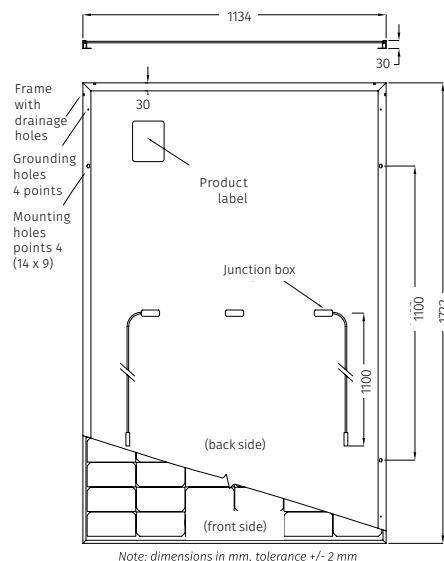
- **25-years** performance warranty with max power decrease from 2nd year **0.5%/year**
- **97%** at the end of first year
- **90%** at the end of 20th year
- **87%** at the end of 25th year

Product guarantees

- **15-year** product warranty
- Third-party product **liability** insurance
- All FuturaSun's modules are designed and guaranteed by the **Italian** headquarters

Mechanical Specifications

Dimensions	1722 x 1134 x 30 mm
Weight	20.8 kg
Glass	High transmission, Low iron, Tempered, ARC, Thickness 3.2 mm
Cells	108 monocrystalline half-cut MBB PERC cells 182 x 91 mm
Frame	Black anodized aluminium frame with mounting and drainage holes
Junction boxes	Certified according to IEC 62790, IP 68 approved, 3 bypass diodes
Cables	Solar cable, length 1100 mm or customized assembled with 4mm ² compatible connectors
Backsheet	Composite Multilayer film - black front and white back
Maximum reverse current (I _r)	25 A
Maximum system voltage	1000 V (1500 V on request)
Mechanical load (snow)	Design load: 3600 Pa, (5400 Pa including safety factor 1.5)
Mechanical load (wind)	Design load: 1600 Pa, (2400 Pa including safety factor 1.5)



Electrical data - STC*

FU 400 M

Sorting tolerance	W	0/+5
Module power (P _{max})	W	400
Open circuit voltage (V _{oc})	V	37.13
Short circuit current (I _{sc})	A	13.75
Maximum power voltage (V _{mpp})	V	31.01
Maximum power current (I _{mpp})	A	12.9
Module efficiency	%	20.48

Electrical data - NOCT**

FU 400 M

Module power (P _{max})	W	300
Open circuit voltage (V _{oc})	V	34.96
Short circuit current (I _{sc})	A	10.94
Maximum power voltage (V _{mpp})	V	29.19
Maximum power current (I _{mpp})	A	10.28

Temperature ratings

Temperature coefficient I _{sc}	%/°C	0.05
Temperature coefficient V _{oc}	%/°C	-0.27
Temperature coefficient P _{max}	%/°C	-0.35
NOCT**	°C	45
Operating temperature	°C	from -40 to +85

Certifications

Factory	ISO 9001 - 14001 - 45001
Product	IEC EN 61215 - IEC EN 61730 Class 1 UNI9177, IEC EN 61701, IEC EN 62716, MCS, EPD

Packaging

Quantity / Pallet	36 pcs
Container 40' HC	936 pcs / 26 pallets

The information included in this module datasheet is subject to change without notice and is provided for informational purposes only. No contractual rights are established or should be inferred because of user's reliance on the information contained in this module datasheet. Please refer to the appropriate module user guide and module product specification document for more detailed technical information regarding module performance, installation and use.

*Standard Test Conditions STC: 1000 W/m² - AM 1.5 - 25 °C - tolerance: P_{max} (±3%), V_{oc} (±4%), I_{sc} (±5%)
**Nominal Operating Cell Temperature NOCT: 800 W/m² - T=45 °C - AM 1.5

EN_06