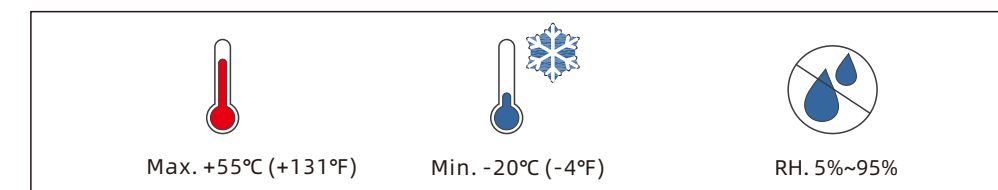


Quick Installation Manual

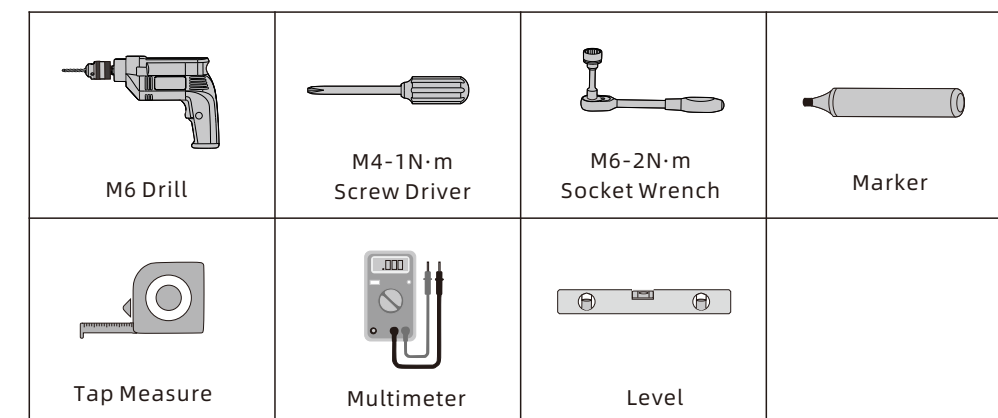
APX 5.0-30.0M-S3



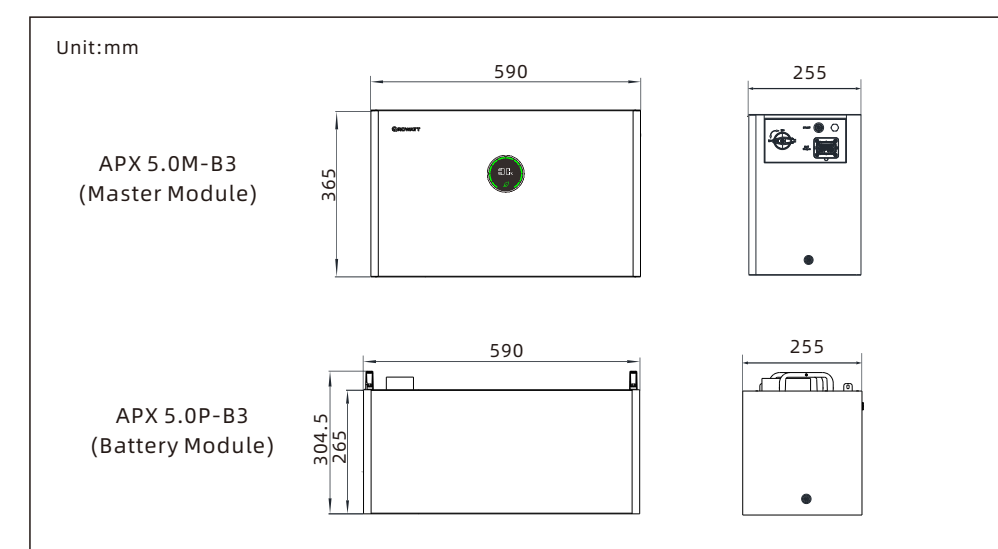
Environment requirements



Installation tools

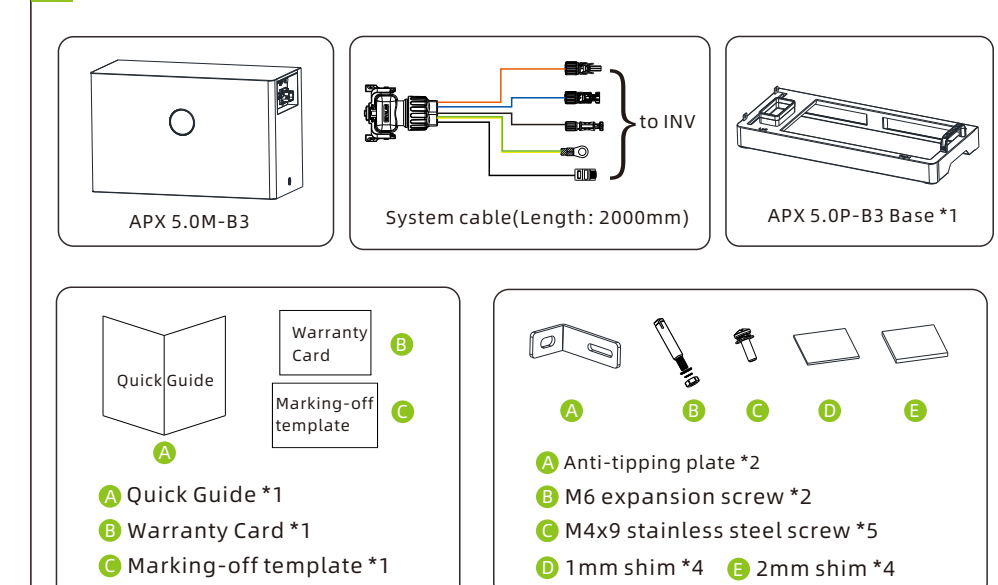


Dimensions

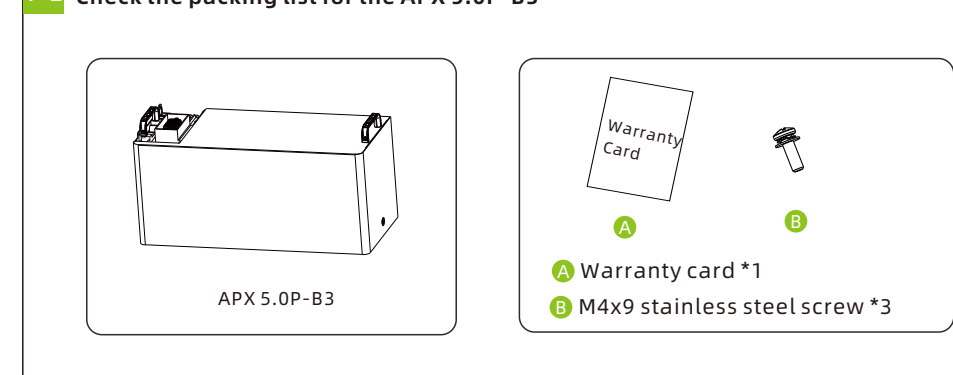


1. Inspection upon delivery

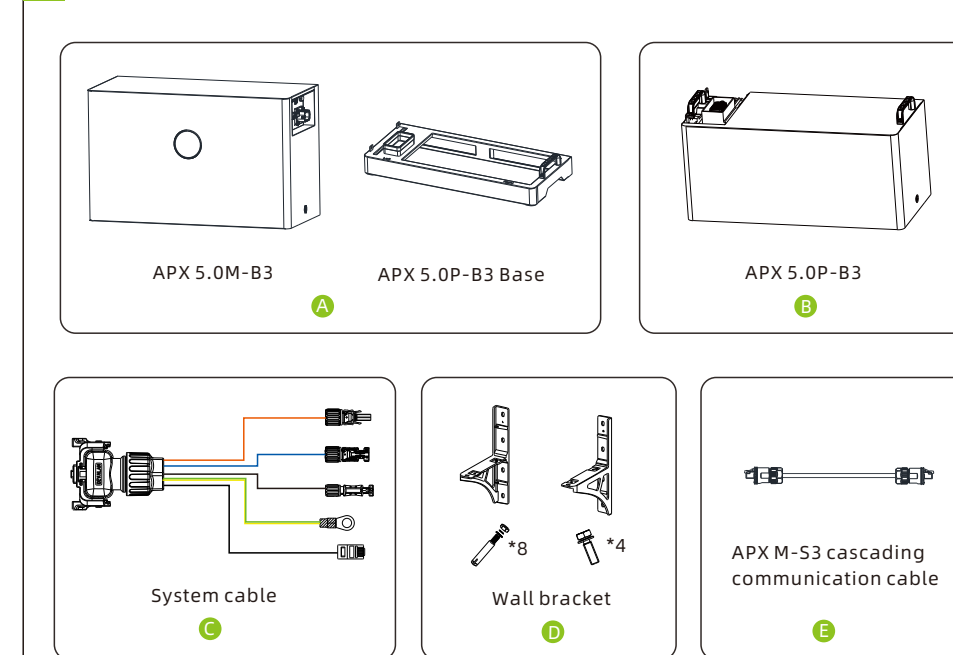
1-1 Check the packing list for the APX 5.0M-B3



1-2 Check the packing list for the APX 5.0P-B3

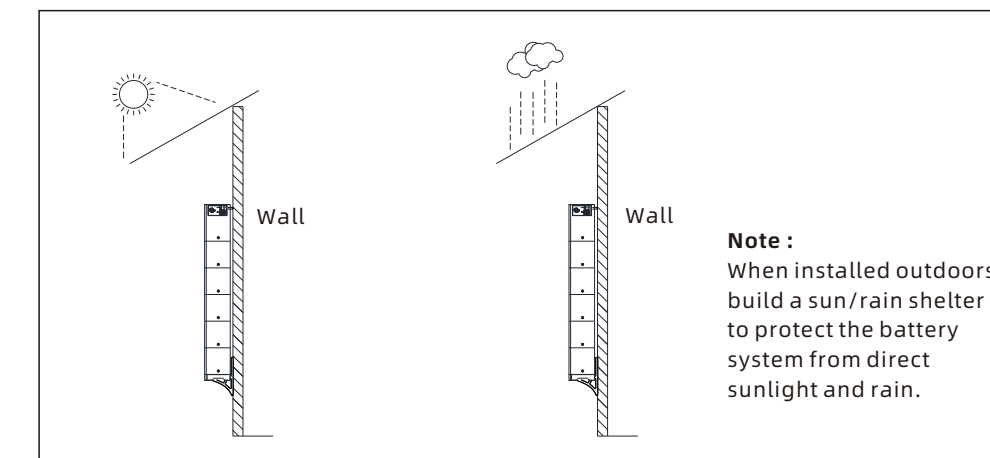


1-3 Check the APX 5.0-30.0M-S3 Battery System of different capacities

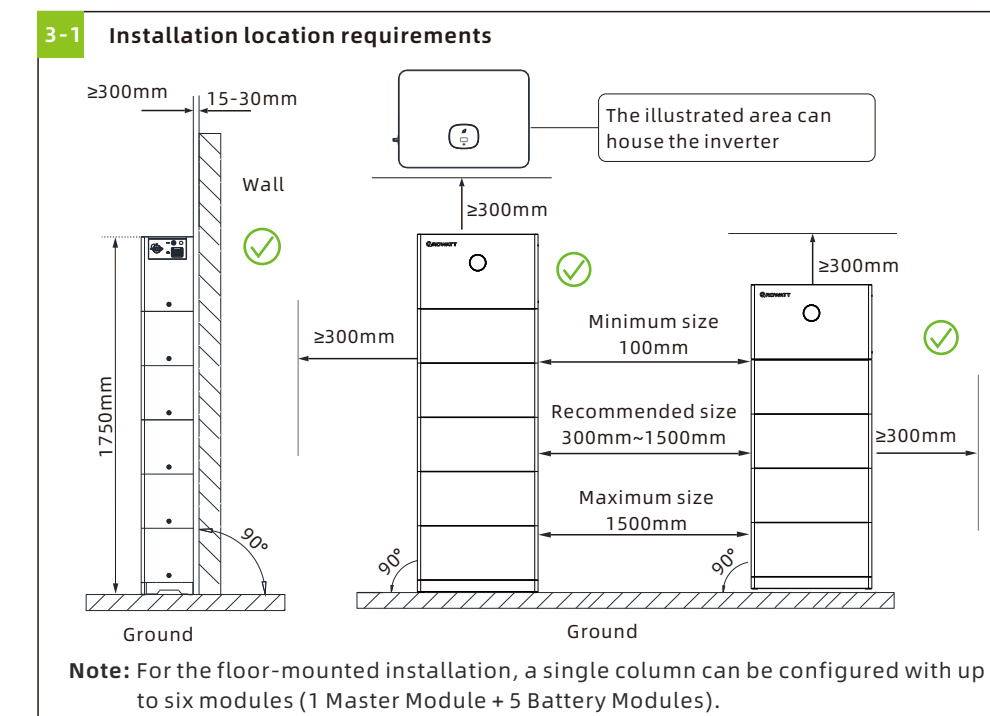


Battery System Capacity	Floor-mounted Installation Compound Mode	Wall-Mounted Installation Compound Mode
5kWh	A+C	A+C+D
10kWh	A+B+C	A+B+C+D
15kWh	A+B*2+C	A+B*2+C+D
20kWh	A+B*3+C	A+B*3+C+D
25kWh	A+B*4+C	A+B*4+C+D
30kWh	A+B*5+C	A+B*5+C+D
40kWh	A*2+B*6+C*2+E	A*2+B*6+C*2+D*2+E
50kWh	A*2+B*8+C*2+E	A*2+B*8+C*2+D*2+E
60kWh	A*2+B*10+C*2+E	A*2+B*10+C*2+D*2+E
70kWh	A*3+B*11+C*3+E*2	A*3+B*11+C*3+D*3+E*2
80kWh	A*3+B*13+C*3+E*2	A*3+B*13+C*3+D*3+E*2
90kWh	A*3+B*15+C*3+E*2	A*3+B*15+C*3+D*3+E*2

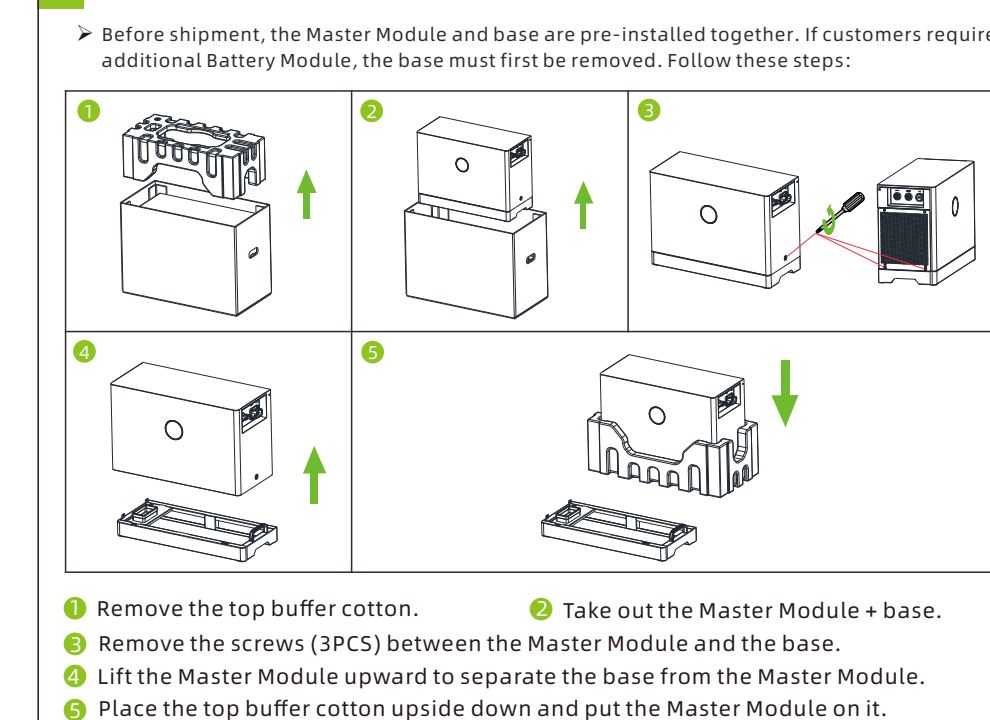
2. Installation environment requirement



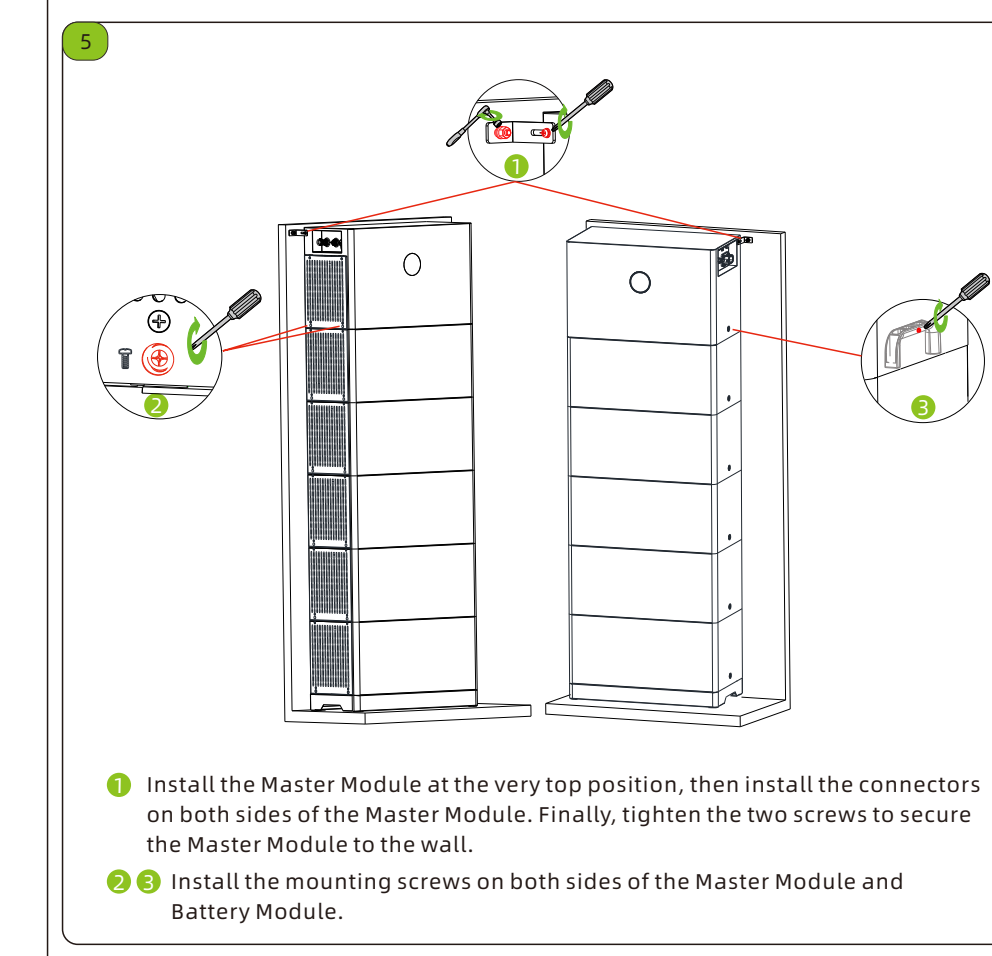
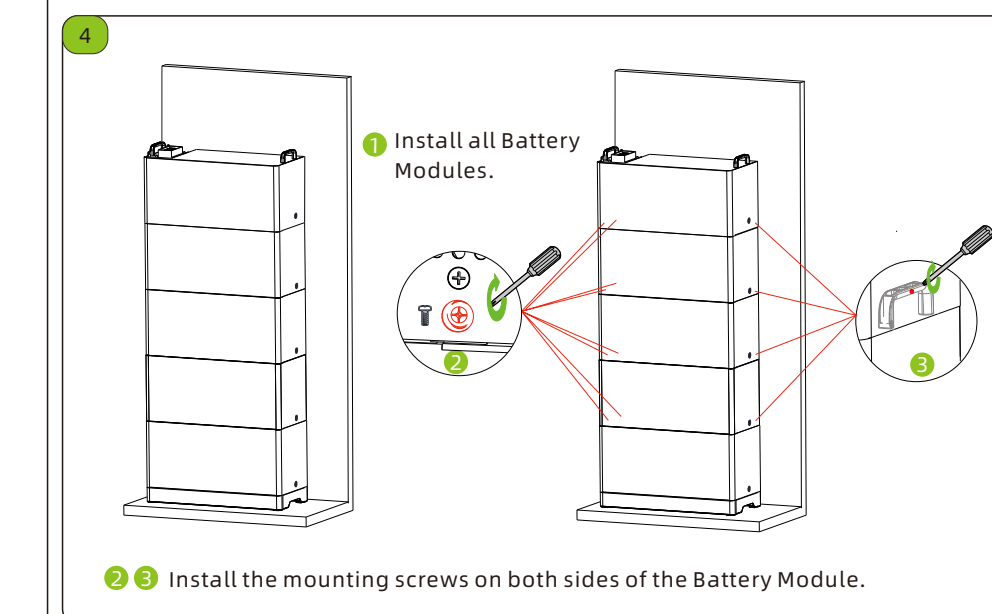
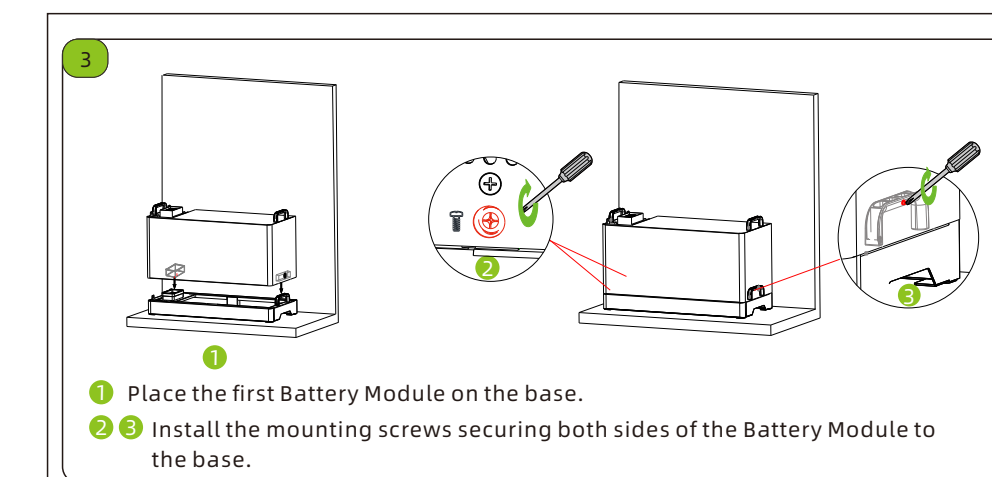
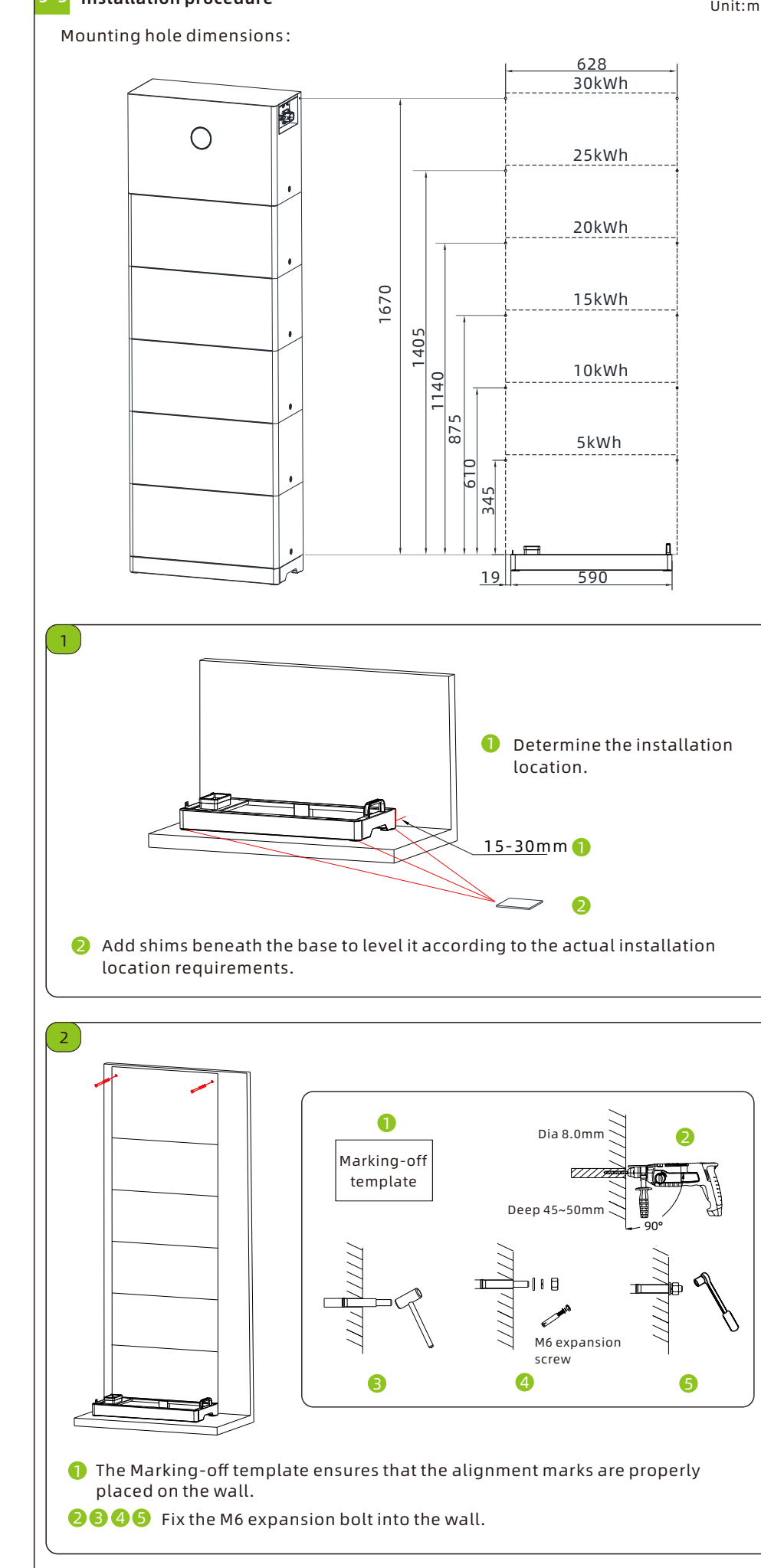
3. Floor-mounted installation



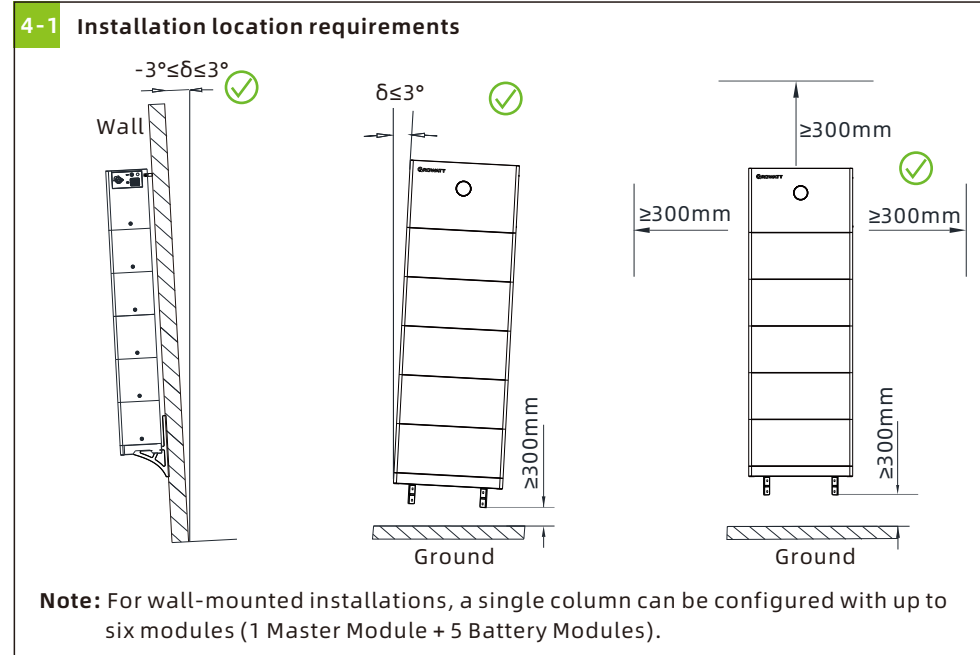
3-2 Preparation work before installation



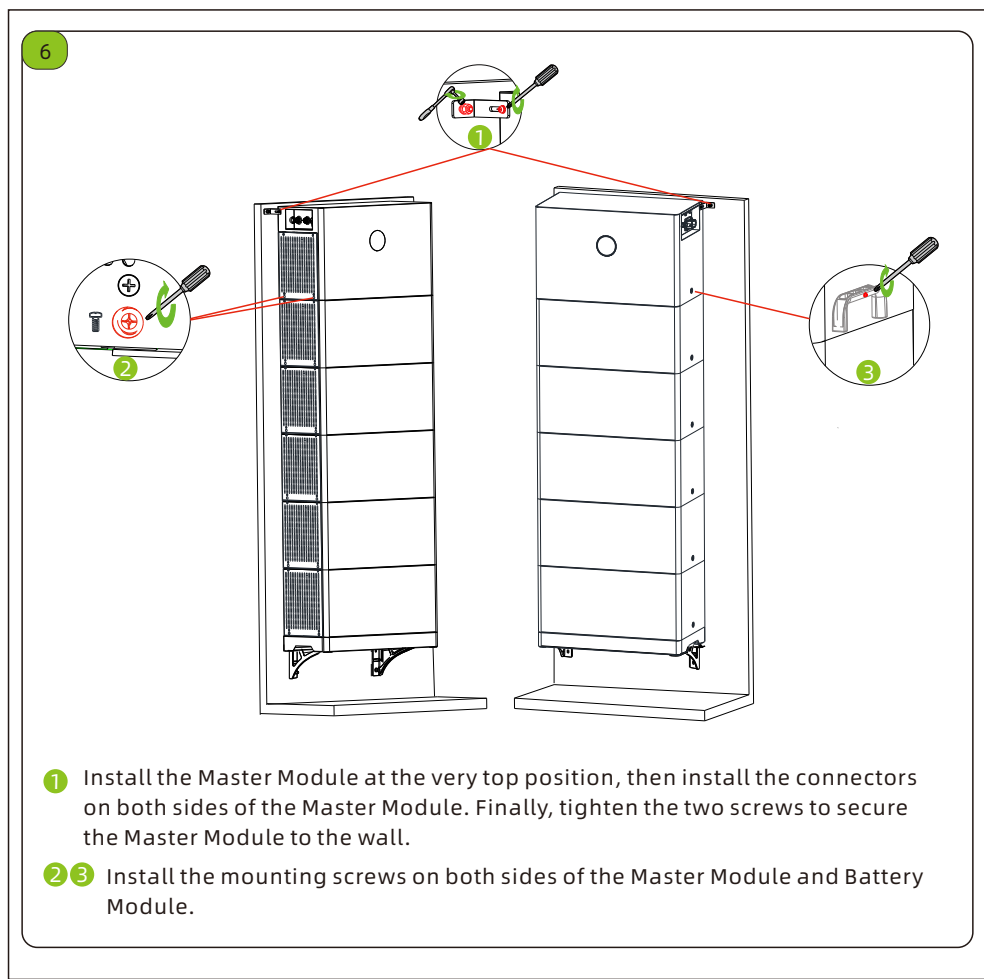
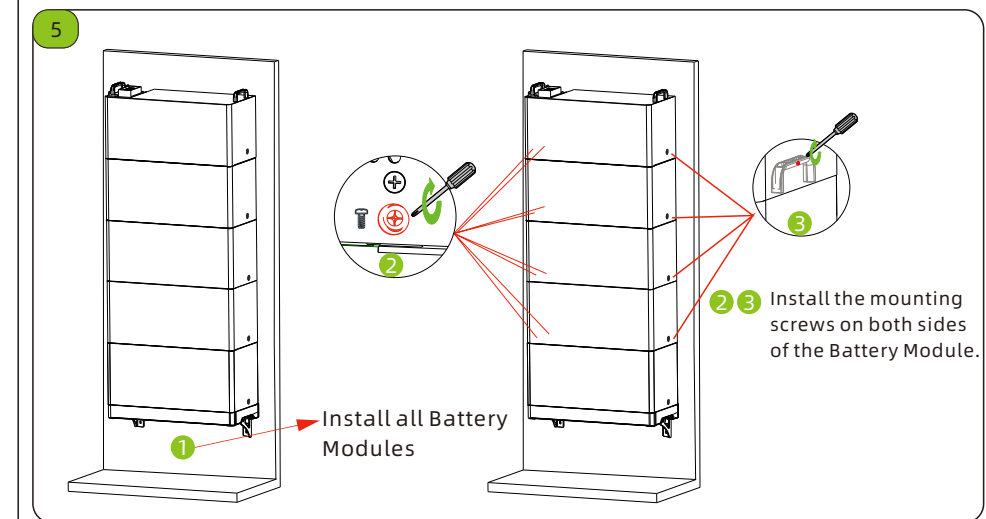
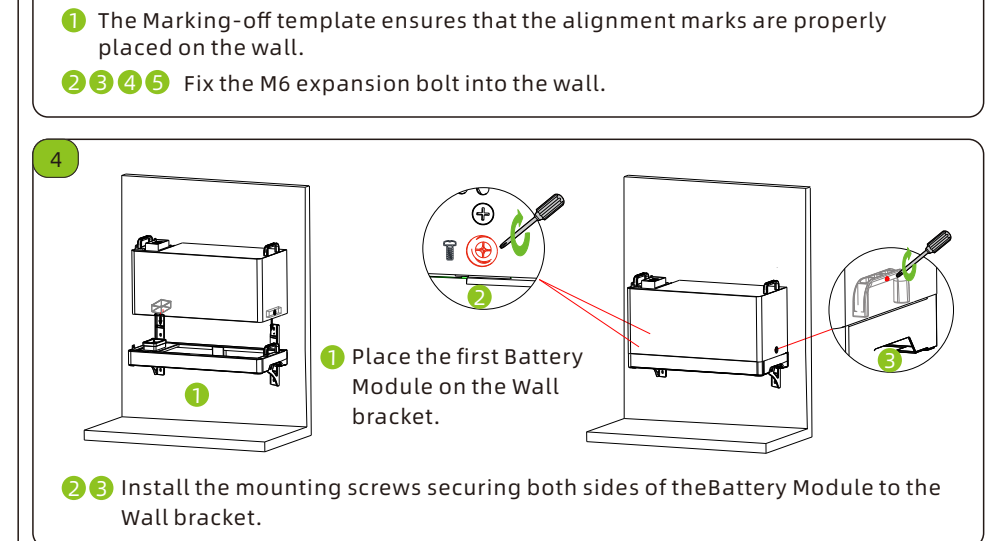
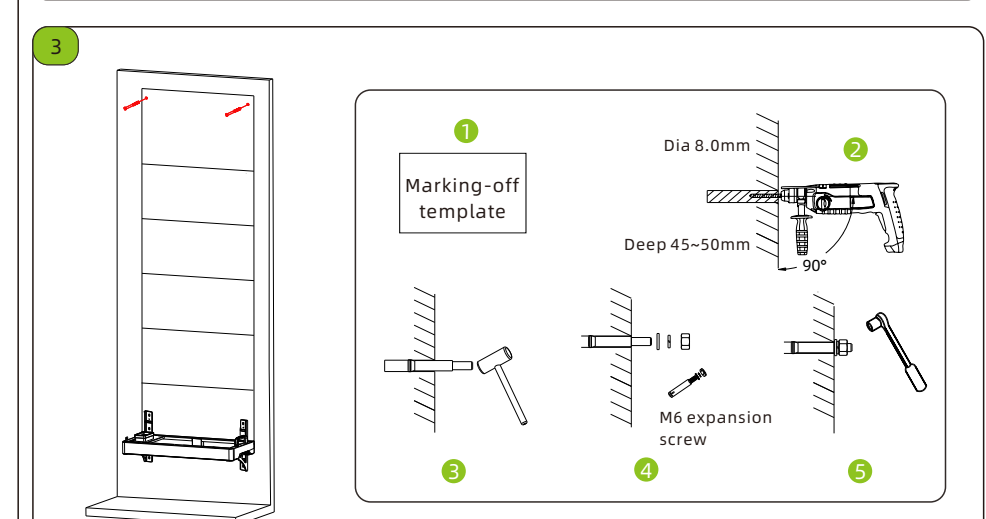
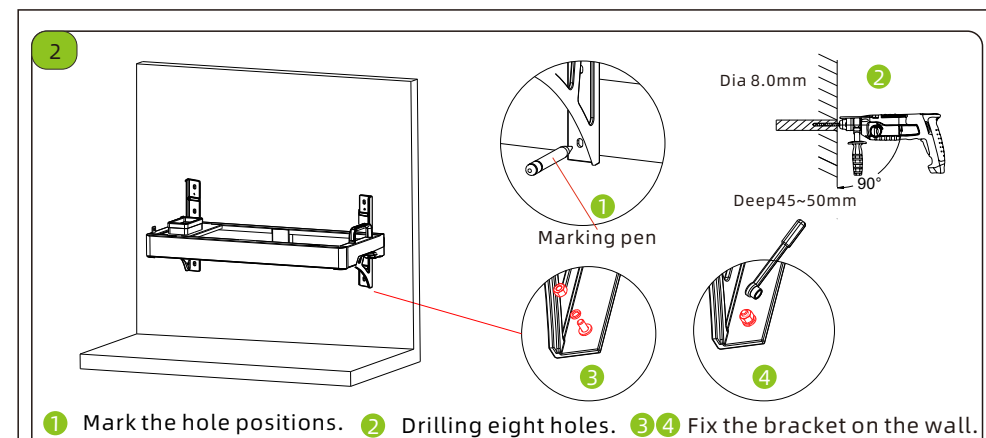
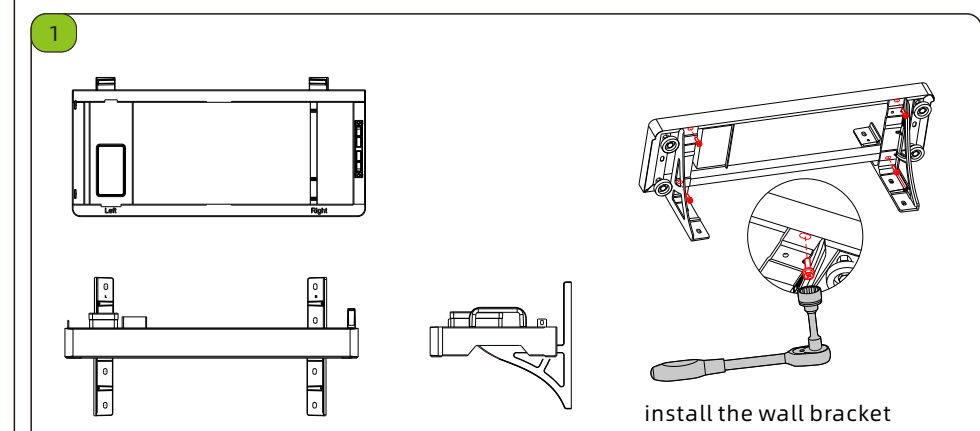
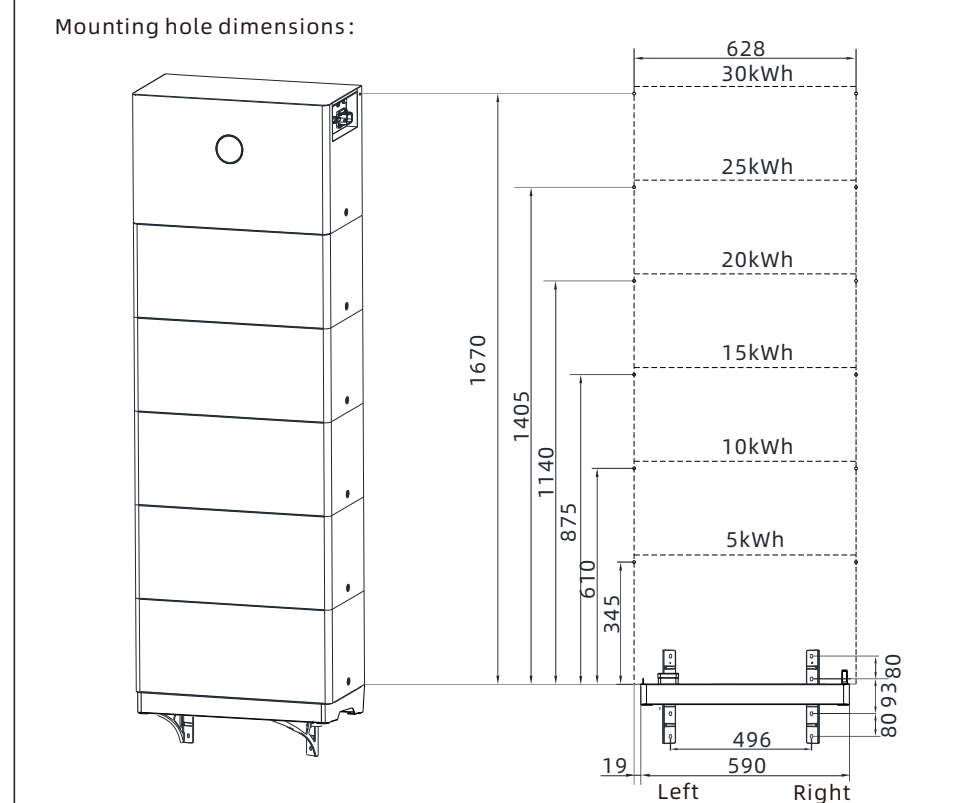
3-3 Installation procedure



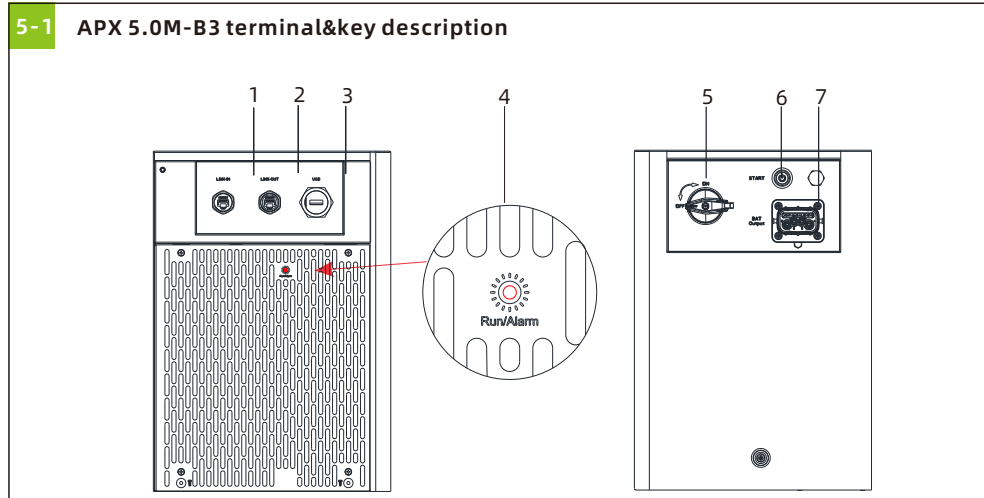
4. Wall-mounted installation



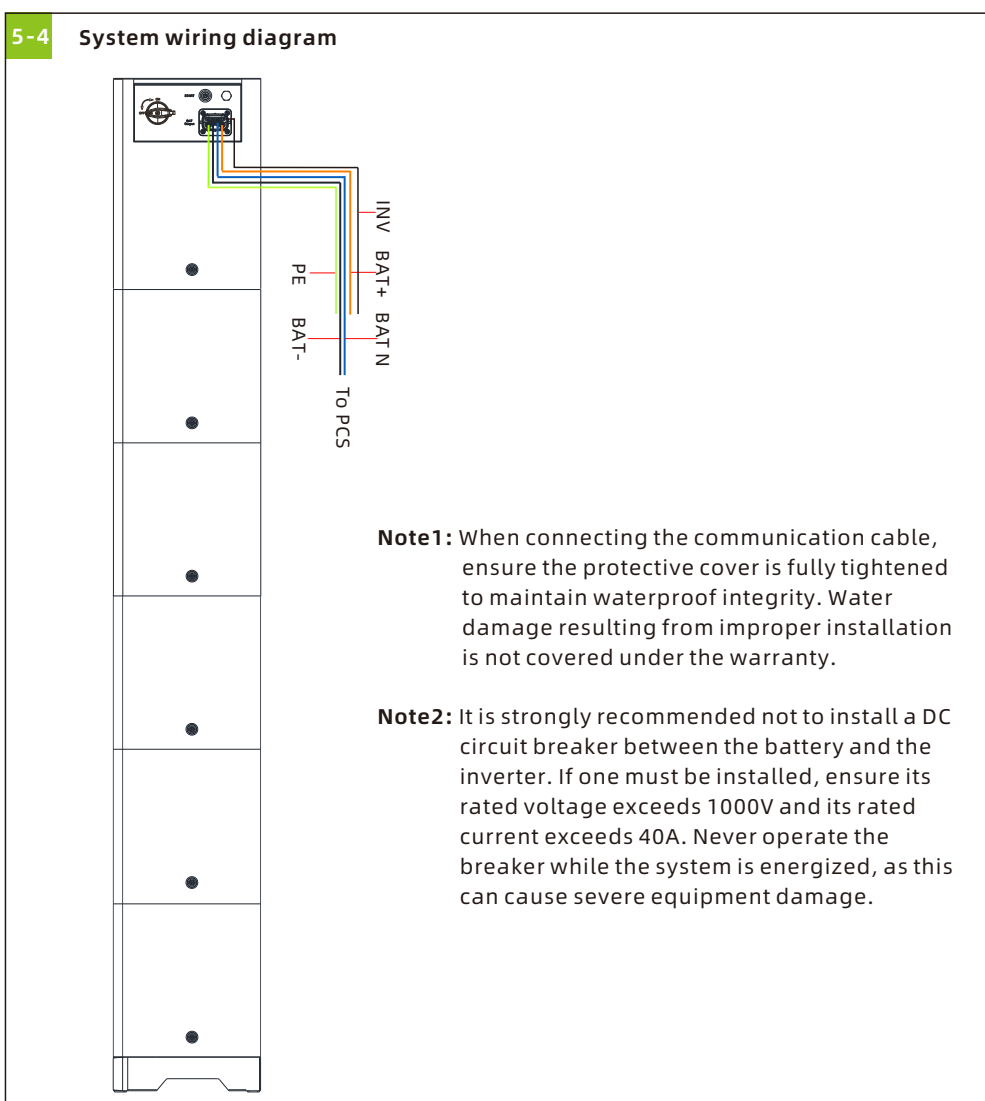
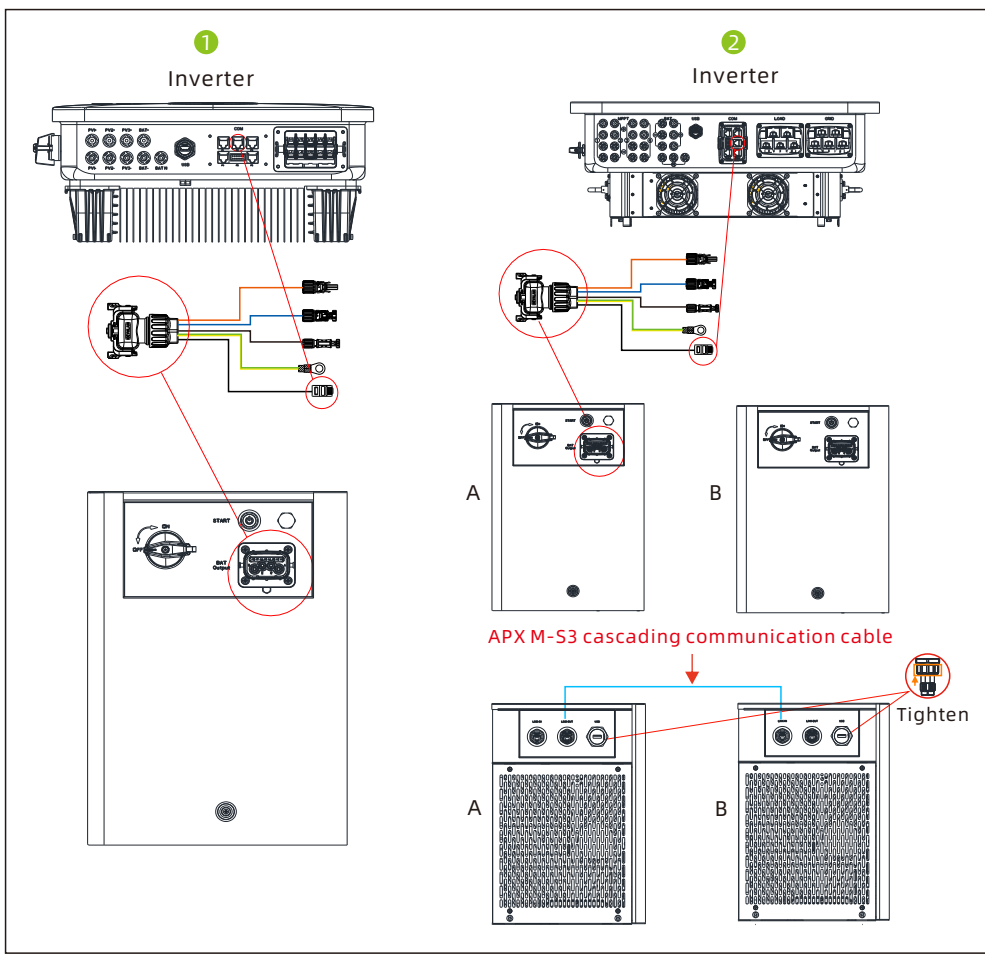
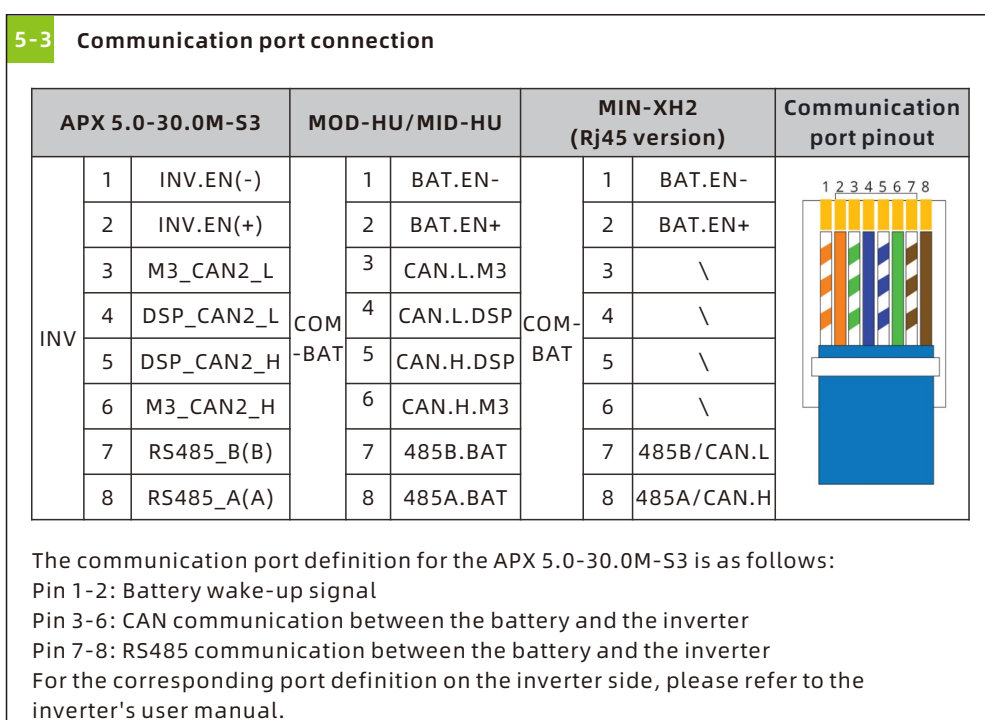
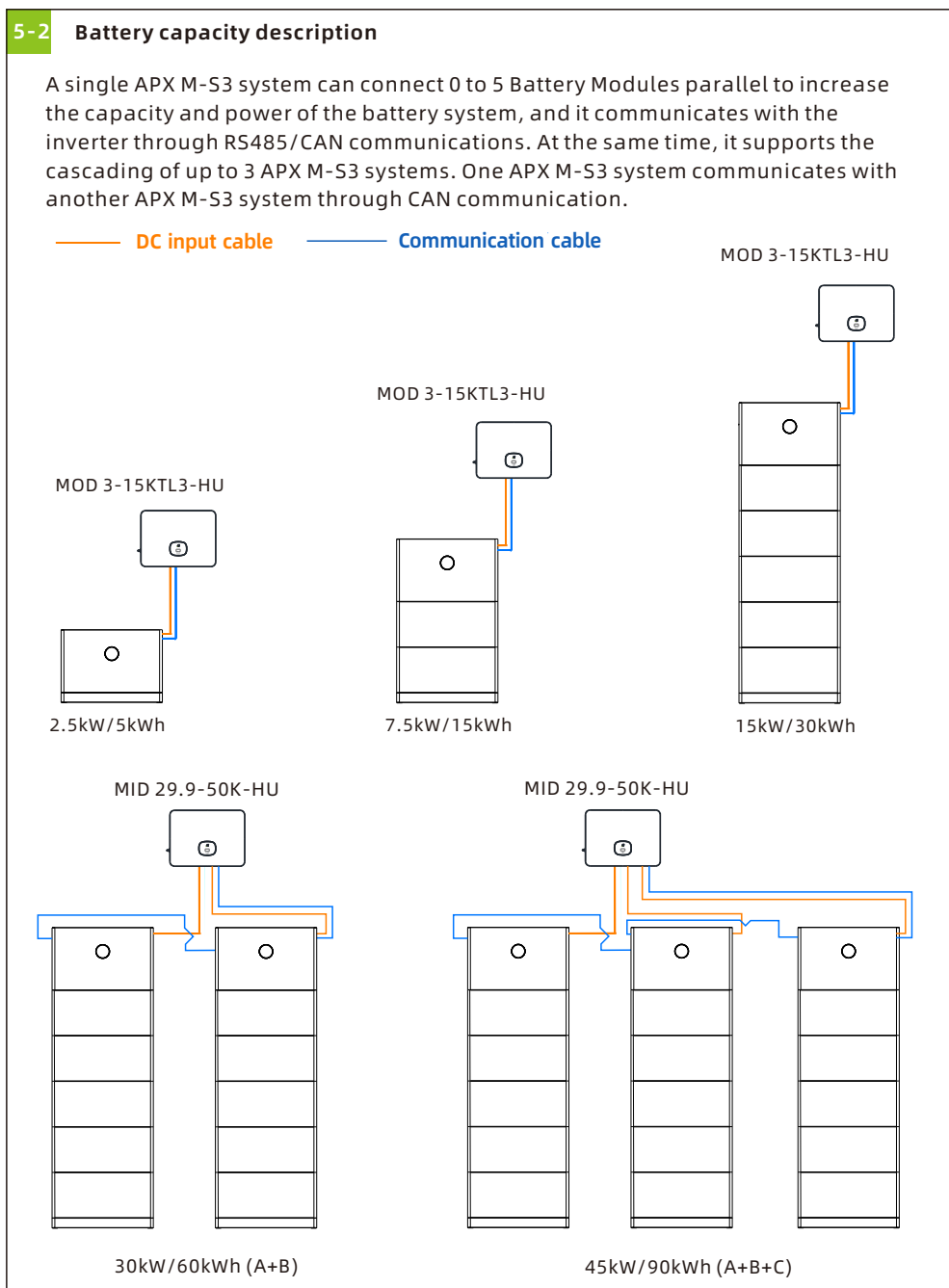
4-2 Installation location requirements Unit:mm



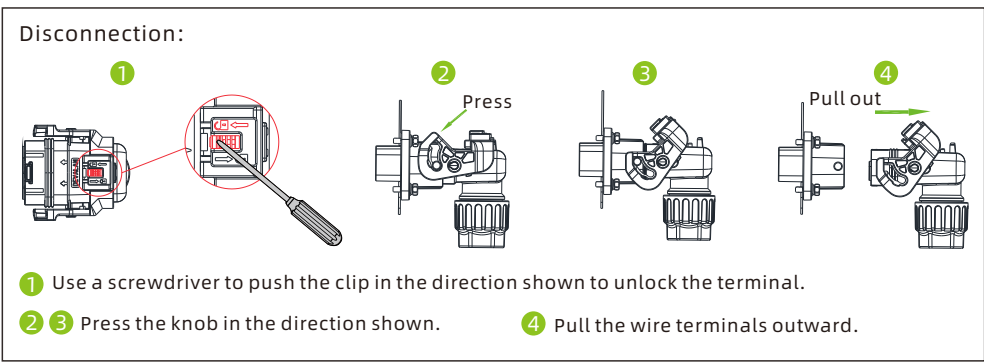
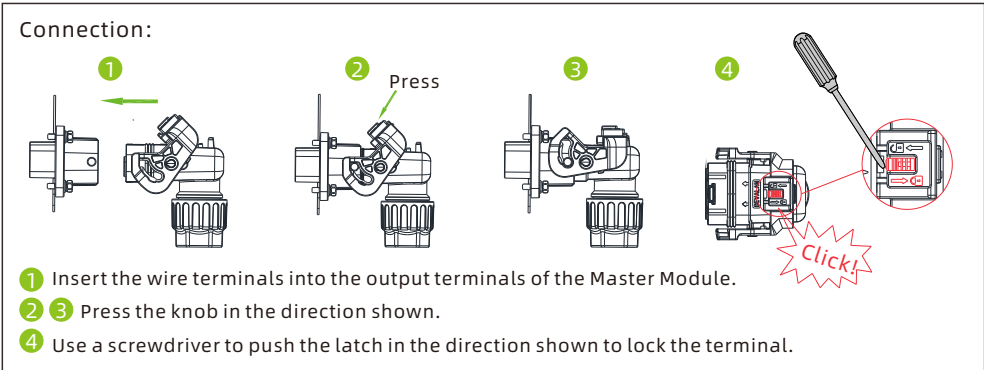
5. Cable connection



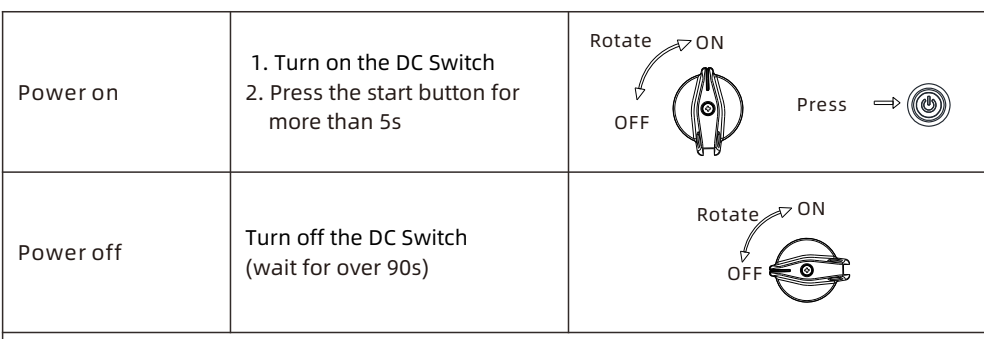
No.	Port	Function
1	Link-in	APX M-S3 cascading communication input port
2	Link-out	APX M-S3 cascading communication output port
3	USB	USB port for inserting a USB flash drive to update the firmware
4	LED	LED status indicator, Steady green:Normal; Steady red:Fault; Permanent darkness: Hibernation
5	DC switch	Turn on/off the power connection from Master Module to inverter
6	Start button	Wake up the Battery Module (Press and hold for over 5 seconds)
7	Power and communication integrated terminal	Power and communication interfaces connected to the inverter



6. Connection & disconnection of power and communication integrated terminal



7. Powering on/off the battery system



Note:
1. Before performing maintenance or inspection work, ensure that the AC circuit breaker and the DC switch of the inverter, as well as the DC switch on the APX 5.0M-B3 are all disconnected. After powering down the system, wait for 2 minutes and confirm that the LED display light on the APX 5.0M-B3 has turned off. Do not perform any operations until the system is completely shut down.
2. When cascading multiple APX M-S3 systems, pressing the start button on any Master Module will activate the entire system.
3. This document is subject to ongoing review and revision. Growatt reserves the right to modify the content at any time without prior notice. Unless otherwise specified, this document serves solely as a quick installation guide. All information and suggestions in this document do not constitute a warranty of any kind, express or implied. Growatt reserves all rights for final interpretation.

8. Service and contact

Shenzhen Growatt New Energy Co., Ltd.
4-13/F, Building A, Sino-German (Europe) Industrial Park, Hangcheng Blvd, Bao'an District, Shenzhen, China
E service@growatt.com
W en.growatt.com

For local customer support, please visit <https://en.growatt.com/support/contact>



Download Manual



Growatt New Energy

GR-UM-529-A-00 (PN: 044.0155100)